



InstaShow™ X

# User Manual

# Copyright

Copyright © 2022 by BenQ Corporation. All rights reserved. No part of this publication may be reproduced, transmitted, transcribed, stored in a retrieval system or translated into any language or computer language, in any form or by any means, electronic, mechanical, magnetic, optical, chemical, manual or otherwise, without the prior written permission of BenQ Corporation.

# Disclaimer

BenQ Corporation makes no representations or warranties, either expressed or implied, with respect to the contents hereof and specifically disclaims any warranties, merchantability or fitness for any particular purpose. Further, BenQ Corporation reserves the right to revise this publication and to make changes from time to time in the contents hereof without obligation of BenQ Corporation to notify any person of such revision or changes.

This user manual aims to provide the most updated and accurate information to customers, and thus all contents may be modified from time to time without prior notice. Please visit [www.BenQ.com](http://www.BenQ.com) for the latest version of this manual.

The illustrations and the images in this guide are for your reference.

# Patents

Please go to <http://patmarking.benq.com/> for the details on BenQ projector patent coverage.

# Statement regarding hyperlinks and third-party websites

BenQ is not responsible for the content of the websites or of similar resources, which are maintained and controlled by third parties, that may be linked from this product. Providing links to those websites or to similar resources does not mean that BenQ makes any warranty or representation to their content by expression or by implication.

Any third party content or service preinstalled in this product is provided "as is". BenQ does not, by expression or by implication, make any warrant to the content or to the services provided by third parties. BenQ does not warrant or guarantee that the content or services provided by third parties are accurate, effective, most up-to-date, legal, or complete. Under no circumstances shall BenQ be liable for the content or services provided by third parties including their negligence. Services provided by third parties may be terminated temporarily or permanently. BenQ does not warrant or guarantee that the any content or services provided by third parties are in good condition at any time, and is not liable for the termination of the said content and services. In addition, BenQ is not involved in any transactions you conduct in the websites or similar resources maintained by third parties.

You should contact the content or service providers for any questions, concerns, or disputes.

# BenQ ecoFACTS

BenQ has been dedicated to the design and development of greener product as part of its aspiration to realize the ideal of the “Bringing Enjoyment 'N Quality to Life” corporate vision with the ultimate goal to achieve a low-carbon society. Besides meeting international regulatory requirement and standards pertaining to environmental management, BenQ has spared no efforts in pushing our initiatives further to incorporate life cycle design in the aspects of material selection, manufacturing, packaging, transportation, using and disposal of the products. BenQ ecoFACTS label lists key eco-friendly design highlights of each product, hoping to ensure that consumers make informed green choices at purchase. Check out BenQ's CSR Website at <http://csr.BenQ.com/> for more details on BenQ's environmental commitments and achievements.



# Table of Contents

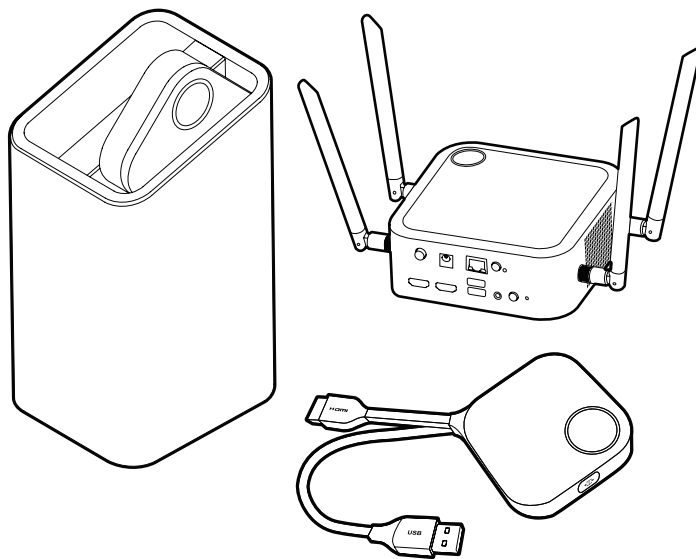
<b>Copyright</b> .....	<b>2</b>
<b>Disclaimer</b> .....	<b>2</b>
<b>Patents</b> .....	<b>2</b>
<b>Statement regarding hyperlinks and third-party websites</b> .....	<b>2</b>
<b>BenQ ecoFACTS</b> .....	<b>3</b>
<b>Introduction</b> .....	<b>6</b>
<b>Product features</b> .....	<b>7</b>
<b>Package content</b> .....	<b>8</b>
<b>Product specifications</b> .....	<b>9</b>
<b>Overview</b> .....	<b>11</b>
Button .....	11
Host .....	11
LED indicators of the Button and the Host.....	12
<b>Installation</b> .....	<b>13</b>
<b>Environment check</b> .....	<b>13</b>
<b>Assembling the Host</b> .....	<b>14</b>
<b>Setting up the Host</b> .....	<b>14</b>
Attaching the Host to the ceiling .....	14
Attaching the Host to a ceiling mount.....	15
Placing the Host on a table .....	15
<b>Positioning the Host antennas</b> .....	<b>18</b>
For ceiling installation.....	18
For ceiling mount installation .....	18
For table placement.....	19
<b>Connecting the HDMI cable and power</b> .....	<b>19</b>
Assembling the adapter .....	20
Connecting the HDMI cable.....	21
Power supply via a power adapter .....	21
LAN connection.....	22
<b>Setting up and powering a Button</b> .....	<b>22</b>
<b>Pairing a Button and Host</b> .....	<b>25</b>
When the Host is placed on a table.....	25

Storing Buttons and USB cable in the cradle .....	27
Resetting a Host.....	27
Resetting a Button .....	28
Enabling network standby mode .....	29
<b>Starting and stopping presentations .....</b>	<b>30</b>
Getting ready .....	30
Starting presentation .....	30
Idle presentation .....	31
Split screen presentations.....	31
Starting a split screen presentation.....	32
Switching from a split screen to a full screen presentation.....	33
Presenting with mobile devices .....	34
Touch back.....	35
<b>Web management.....</b>	<b>36</b>
<b>Accessing the web management interface.....</b>	<b>36</b>
Logging into the web management interface via direct connection .....	36
Logging into the web management interface via LAN.....	38
Logging into the web management interface via a wireless network.....	39
<b>Getting started.....</b>	<b>40</b>
Top command buttons.....	40
Main column.....	40
<b>Information .....</b>	<b>41</b>
<b>WAN .....</b>	<b>43</b>
<b>Wireless Network.....</b>	<b>44</b>
<b>Pairing.....</b>	<b>49</b>
<b>Monitor .....</b>	<b>52</b>
<b>Advance Setting.....</b>	<b>53</b>
<b>Scheduling .....</b>	<b>56</b>
<b>Tools .....</b>	<b>58</b>
<b>Legal Announcement .....</b>	<b>67</b>
<b>Troubleshooting.....</b>	<b>69</b>
<b>Error code .....</b>	<b>71</b>

# Introduction

InstaShow™ X (or “the product” in this document) is a wireless device for corporate meeting rooms. Users expect devices to respond instantly, apps to launch and to control at their fingertips, and information to be available on demand. The product bypasses the complicated steps of IP addresses, driver installation, app execution, setting selection, etc. to quickly deliver professional, stable visual quality for teams to collaborate freely and confidently. The product is a unique all-hardware solution without software issues for universal compatibility and display flexibility.

A standard product set consists of an InstaShow™ X Host (or “Host” in this document) and two InstaShow™ X Buttons (or “Buttons” in this document). Depending on the location where you buy the product, the software of the base unit can be different. You can buy additional InstaShow™ X Button kits if needed.



- 
- "InstaShow™ X" will hereinafter be referred to as "the product" in this document.
  - "InstaShow™ X Host" will hereinafter be referred to as "Host" in this document.
  - "InstaShow™ X Button/Buttons" will hereinafter be referred to as "Button"/"Buttons" in this document.

! Your product complies with the local wireless regulations and the warranties are valid in the country/region where the product is purchased. Using the product outside the purchased country/region does not guarantee the wireless functionalities. And modification of any part of the product will void the warranties.

---

The InstaShow™ X is considered as networked equipment with high network availability (HiNA equipment with HiNA functionality) as it provides wireless network access for wireless InstaShow™ X Buttons. The detailed operations of standby please refer to [Enabling network standby mode on page 29](#) for more information.

## Product features

The product is equipped with the following features:

Features	Description
True Plug & Play	Simply connect the product into your USB and HDMI ports, then press the Button to start presenting immediately.
No Software	The product doesn't need any software installation or execution. There's no setup, configuration, or waiting for pop-ups to launch. Just plug into your PC or Mac and start presenting immediately.
Split Screen Presentations	Up to eight users can simultaneously project their screen via the product in a dual-screen, 3-way or 4-way split screen configuration, so that you can view and reference multiple documents/videos at the same time during your presentation.
Auto Channel Selection	The product automatically selects the best wireless channel upon boot-up, ensuring smooth presentations in any environment.
Touch Back	When the Host is connected to a touchscreen display via its USB ports, you can use the touchscreen to control the screen of the PC that is presenting, allowing you to actively engage with the content that is being presented.
Screen Casting for Mobile Devices	Project your mobile device's screen wirelessly by connecting your mobile device to the Host via the InstaShare app or screencasting capabilities of your mobile device.
Wireless 802.11AX	The latest 802.11AX Wi-Fi guarantees extremely smooth wireless streaming without lag or buffering, also provide better Wi-Fi security with WPA3.
Video and Audio	The product's HDMI output supports up to 60Hz DCI 4K video and stereo sound without cable clutter or complicated driver selection.
Assured Performance	Peace of mind for consistent wireless presentation performance without relying on your PC.
Extended Desktop	Keep your presenter view, notes, and backup data on your laptop screen while presenting to the wireless screen with extended desktop in both Windows and OS X.
FIPS 140-3 Certified Encryption	With FIPS 140-3 certified encryption, each presentation via BenQ InstaShow X Button is protected by NIST approved algorithm in all.
Mobile Projection	For higher security requirement, the presentation can be set to discard other wireless display and only allow InstaShow™ X Button for presentation.
Antibacterial and Antiviral Additive Protection	InstaShow™ X Button covered with Certificated for IONPURE antibacterial and antiviral functional materials on plastic as protection when using InstaShow™ X Buttons.

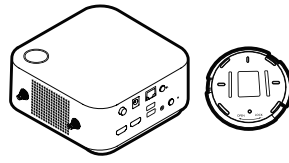


- Touch back via USB port is only supported for Windows-based PCs. Macs and mobile devices cannot be controlled via touch screens.
- Transmission distance depends on actual environment. Stated distance is based on line-of-sight measurement. Structures constructed of steel, wood, concrete, or brick may decrease transmission distance.
- According to regulatory restrictions in different regions of the world, Wi-Fi channels cannot be used in countries outside the purchased region.

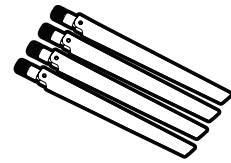
## Package content



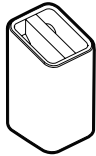
InstaShow™ X Buttons



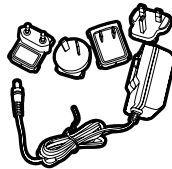
InstaShow™ X Host and Lid



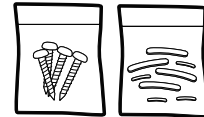
4 Antennas



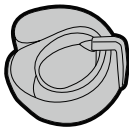
Cradle



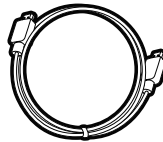
Adapter & Plugs



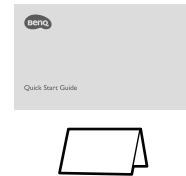
Screws & Rubber Foot



Velcro Strap



Cable: HDMI A(M) to A(M)



Quick Start Guide & Safety Statement



- Available accessories and the pictures shown here may differ from the actual contents and the product supplied for your region.
- Use original accessories to ensure compatibility.
- Always keep the product and accessories out of reach of children.



## Product specifications

General Features	
Model name	WDC30
Color	Black
Interface	HDMI (Video) + USB (Type-A) + 3.5mm Jack (Audio) + RJ45 (Ethernet)
Input resolution	Up to 1920x1080(FHD)
Output resolution	<ul style="list-style-type: none"> <li>• HDMI 1.4 (Comply with HDCP 1.4): 720x480P60, 1920x1080P24, 1920x1080P30, 1920x1080P50, 1920x1080P60</li> <li>• HDMI 2.0 (Comply with HDCP 2.3): 720x480P60, 1920x1080P24, 1920x1080P30, 1920x1080P50, 1920x1080P60, 3840x2160P24, 3840x2160P50, 3840x2160P60, 4096x2160P24, 4096x2160P50, 4096x2160P60</li> </ul>
Mode	Split screen mode(on/off)
Simultaneous connections	64 pcs (32 Buttons + 32 BYOD devices)
WiFi standard	WiFi 6 IEEE 802.11ax/ac/n, 2T2R(2.4GHz/5GHz)
Maximum data rate	Up to 1201Mbps + 574Mbps (at 5GHz + 2.4GHz at 802.11ax)
Frequency Band	2.4GHz, 5GHz
WiFi authentication	WPA3-PSK Encryption (AES128bit) backward compatible to WPA2-PSK
Security standard	<ul style="list-style-type: none"> <li>• Common Criteria EAL6+ Certified (EU)</li> <li>• FIPS 140-3 Certified Encryption (US)</li> </ul>
WAN	1Gbps
Support platform	Windows, MAC, Chrome
Supported mobile display	<ul style="list-style-type: none"> <li>• Mobile build in:Airplay,Chromecast</li> <li>• Mobile App (InstaShare): iOS, Android</li> </ul>
Temperature range	Operating: 0°C to +40°C (+32°F to +104°F)
	Storage: -10°C to +60°C (+14°F to +140°F)
Humidity	Storage: 5% to 90% relative humidity, non-condensing
	Operation: 10% to 80% relative humidity, non-condensing
Environmental	
Reach distance	Up to 30m**
Power consumption	Receiver: 12W/40W (Typical/Max)
Standby power consumption	<0.5w
Weight(Net)	1730g
Temperature range	Operating: 0°C to +40°C (+32°F to +104°F)
	Storage: -10°C to +60°C (+14°F to +140°F)
Humidity	Storage: 5% to 90% relative humidity, non-condensing
	Operation: 10% to 80% relative humidity, non-condensing

InstaShow™ X Button			
Cable	USB Type A, HDMI Cable	Power supply	DC 5V±10%, 0.5A
Reset button	x1	LED	Red/Green/Blue*
Present key	x1	Dimension (WxDxH)	81 x 186 x 24mm
Split Screen key	x1 (Share with Pairing Key)	Weight	91.4g
Power consumption	Up to 4.5W / 2.8W (Operating) / 1.8W (Standby)		
Wireless transmission protocol	IEEE 802.11 a/n/ac, 5GHz, 2T2R		
Data rate wireless	Up to 866Mbps (at 5GHz for 802.11ac)		
Frequency Band	5GHz		
InstaShow™ X Host			
Standby button	x1	RJ45	x1
Power button	x1	Kensington lock	x1
Power DC jack	x1	USB (Touch back)	x2 (USB Type-A)
Mobile projection button	x1	Noise Level	Normal: 26dBA
Video output	x2 (HDMI 1.4 x1, HDMI 2.0 x1)	LED	Red/Green/Blue*
Power supply	DC 12V±5%, 3.33A	Dimension (WxDxH)	156 x 156 x 70mm
Power consumption	Max.:40W Normal:12W	Weight	821.5g
Cradle			
Dimension (WxDxH)	85 x 97.5 x 170.4mm	Weight	630g
Package contents			
InstaShow Button	x2	Velcro Strap	x1
InstaShow Host	x1	Quick Start Guide	x1
Cradle	x1	Safety Statement	x1
HDMI Cable	x1	Screws	Yes
Antenna	x4 (Black)	Power Adapter	x1
Power Adapter	x1		

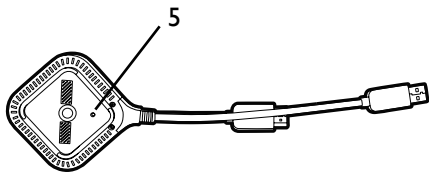
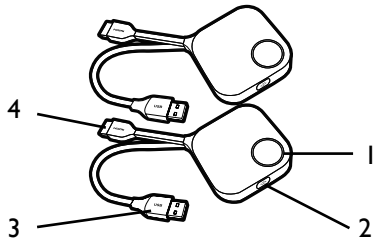


\* See [LED indicators of the Button and the Host on page 12](#) for more information on LED behavior.

\*\* Wireless connection speed and available maximum range depends on wireless environment.

# Overview

## Button



Bottom of a Button

**1. Present key with LED indicator**

Press to start or stop presenting.

**2. Split screen key**

Press to enable split screen presentations.

**3. USB 3.0 connector**

Connect to a computer or laptop.

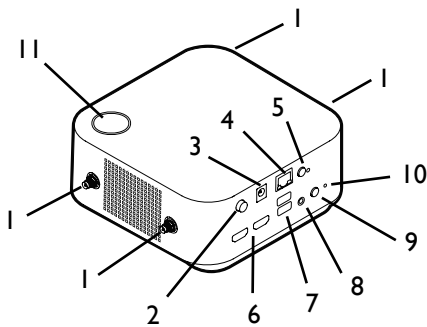
**4. HDMI 1.4 connector**

Connect to a computer or laptop.

**5. RESET**

Poke the **RESET** hole to reset the device if the device stops responding. Refer to [Resetting a Button on page 28](#) for more information.

## Host



**1. Fixture parts for the Antennas**

Refer to [Assembling the Host on page 14](#) for more information.

**2. Power switch**

Press to power on or off the Host.

**3. DC 3.33A port**

Connect to the supplied adapter extender power cable and adapter to power the Host.

**4. LAN port**

Allows users access to the web management interface through a direct or network connection.

**5. Mobile projection**

Allow/Reject mobile device to project.

**6. HDMI ports**

Connect to a display using a HDMI A(M) to A(M) cable.

**7. USB-A ports**

Connect to a touchscreen display, mouse, or keyboard, to control the projected screen.

**8. Audio out**

Connect to a speaker.

## 9. Pairing key

Press to pair with a Button.

## 10. RESET

Poke the **RESET** hole to reset the device if the device stops responding. Refer to [Resetting a Host on page 27](#) for more information.

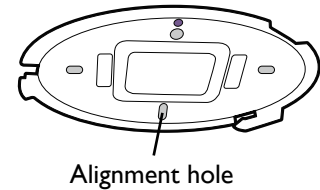
## 11. Standby button with LED indicator

Press to turn the Host on and off.

## 12. Lid

Refer to [Attaching the Host to the ceiling on page 14](#) for more information.

12 Lid of the Host



## LED indicators of the Button and the Host

Please refer to the tables below for detailed indicator and status descriptions for the Button and the Host.

LED indicator on the Button	Status Description
Static blue	The device is presenting.
Flashing blue	The device is pairing.
Flashing green	<ul style="list-style-type: none"><li>• The device is starting up and connecting to the Host.</li><li>• The device is downloading the firmware.</li></ul>
Static green	The device is in standby mode and working normally.
Flashing red	The device is unable to connect to a Host.
Off	The device is powered off.
Quick flashing green	The device is upgrading the firmware.
Static white	The device is powering up.

LED indicator on the Host	Status Description
Static blue	The connected device is presenting.
Flashing blue	The device is pairing.
Flashing green	<ul style="list-style-type: none"><li>• The device is starting up.</li><li>• The device is upgrading the firmware.</li></ul>
Static white	<ul style="list-style-type: none"><li>• The device is powering up.</li><li>• The device is in network standby mode.</li></ul>
Static green	The device is ready for presenting.
Off	The device is powered off.

# Installation

This section will guide you on how to prepare the unit before its initial use.

## Environment check

Before installing your InstaShow™ X kit, check the environmental conditions.

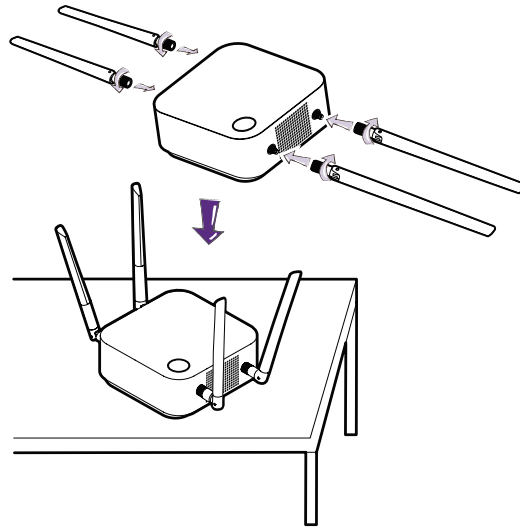
1. Do not install the device near heat sources like radiators or direct sunlight, or in a site with excessive dust or humidity.
2. Ambient temperature conditions are listed as below. Maximum ambient temperature should be +40°C or 104°F. Minimum ambient temperature should be +0°C or 32°F. Storage temperature should be -10°C to +60°C (14°F to 140°F).
3. Humidity conditions are listed as below. For storage, the relative humidity should be 5% to 90% (non-condensing). For operation, the relative humidity should be 10% to 80% (non-condensing).

As the product works with different displays, the steps required to complete the installation may vary according to the actual environment and your display specifications. Follow the procedures below and refer to the specified sections for details.

1. Assemble the Host with the antennas. See [Assembling the Host on page 14](#) for details.
2. Connect the Host to the display and power properly. See [Connecting the HDMI cable and power on page 19](#) for details. Four installation methods are provided.
  - Attaching the Host to the ceiling
  - Attaching the Host to a ceiling mount
  - Placing the Host on a table
  - Installing the Host on the wall or trolley
3. Connect the Buttons to the desired devices and power properly. See [Setting up and powering a Button on page 22](#) for details.
4. Make sure that all the connected devices have been powered on. Press the source button of the display and make sure that the HDMI source has been transmitted. See [Pairing a Button and Host on page 25](#) for details.

## Assembling the Host

Assemble the Host with four antennas by turning the antennas clockwise (right) and counterclockwise (left) to fasten them tightly.

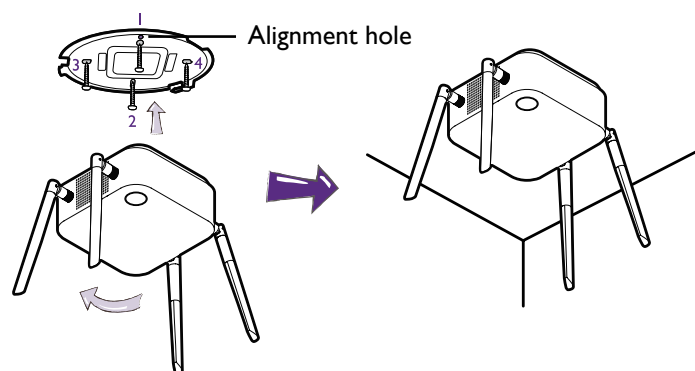


## Setting up the Host

You are provided with four different ways to position the Host. The total weight of the Host Unit is 330g.

### Attaching the Host to the ceiling

1. Place the lid on the ceiling and locate the alignment hole.
2. Use the screws provided to lock the lid to the ceiling.
3. Lock the first hole (1).
4. Follow the instruction in the illustration below to lock the other holes (2-4).
5. Rotate the Host counterclockwise to affix the Host to the lid.

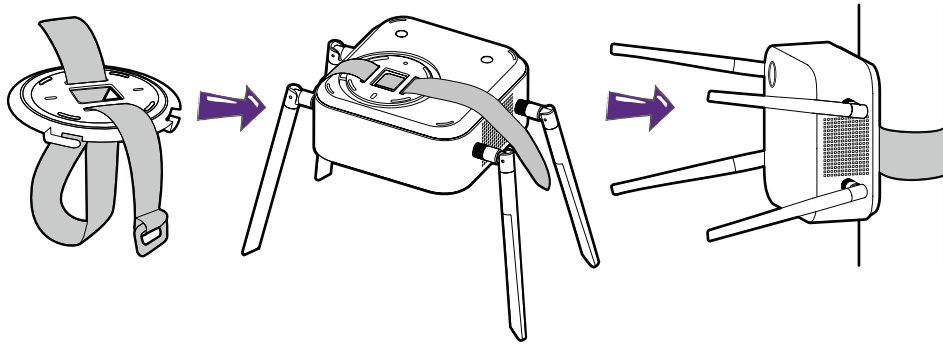


- Please only use the screws (M3\*16 tapping screw) provided with the kit to mount the Host to the ceiling.
- Please see [Positioning the Host antennas on page 18](#) for guidelines on positioning the antenna to maximize signal reception.

## Attaching the Host to a ceiling mount

If the display is mounted on the ceiling:

1. Attach the Host to the ceiling mount using the provided velcro strap.
2. Fix the Host to the mounting holder.
3. Use the supplied velcro to fix the mounting holder and the Host to the ceiling mount as shown in the illustration.

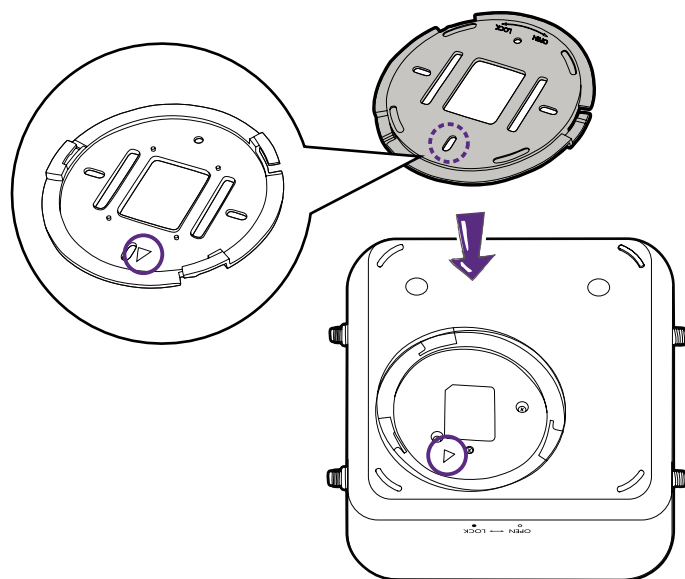


- Please only use the velcro strap (300(L)mm\*25(W)mm) provided with the kit to mount the Host to a ceiling mount.
- Please see [Positioning the Host antennas on page 18](#) for guidelines on positioning the antenna to maximize signal reception.

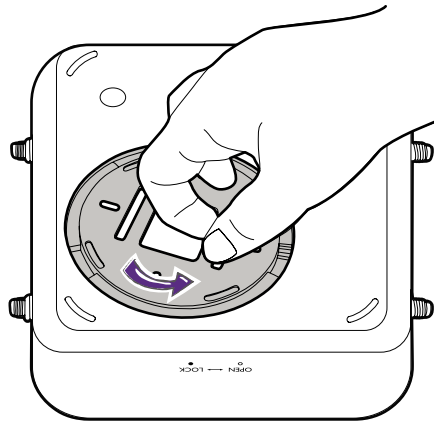
## Placing the Host on a table

If your display is placed on a table, first attach the lid of to the Host in the following the process described below:

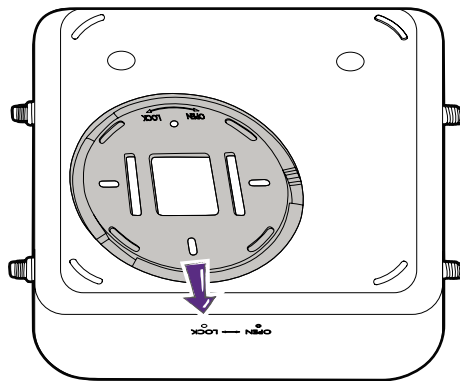
1. Align the lid over the bottom of Host so that the triangle on the bottom side of the lid is aligned to the triangle in the lid compartment, then insert the lid into the lid compartment.



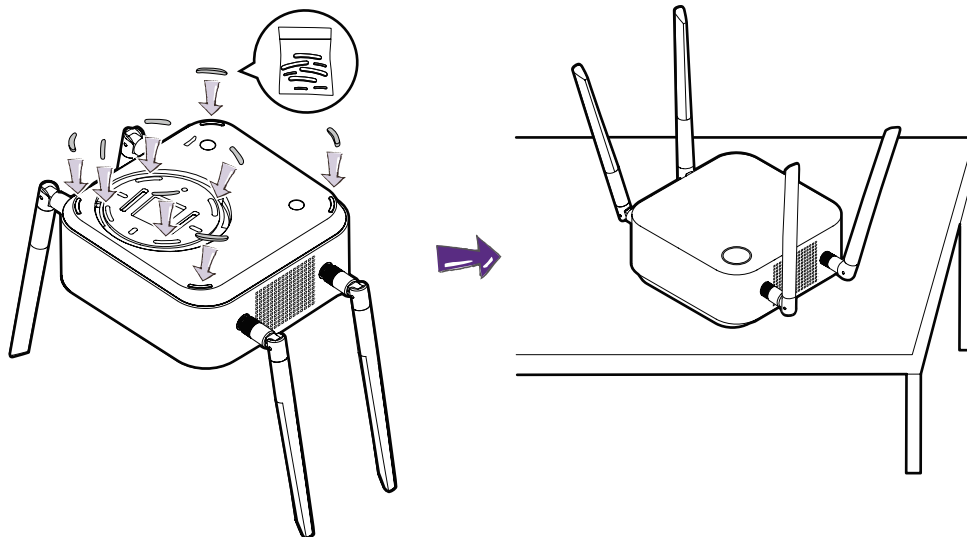
2. Turn the lid counter-clockwise until it clicks into place.



3. When the lid is correctly installed on the Host the alignment hole on the lid should be pointed to the **LOCK** print at the front side of the Host.



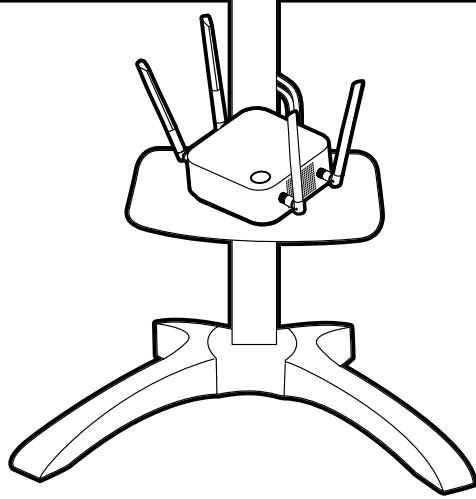
4. Attach the rubber feet to the recesses on the lid and put the Host right next to the display.



- Please only use the rubber foot provided with the kit to attach to the Host.
- Please see [Positioning the Host antennas on page 18](#) for guidelines on positioning the antenna to maximize signal reception.

You can also place the Host on a mobile display trolley. See the illustration.



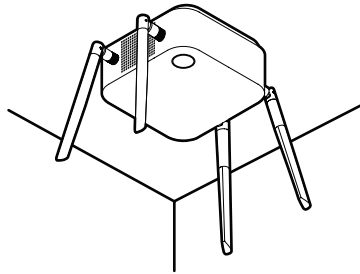


## Positioning the Host antennas

Once you have properly installed the Host, follow the guidelines below to position the antennas to maximize signal reception:

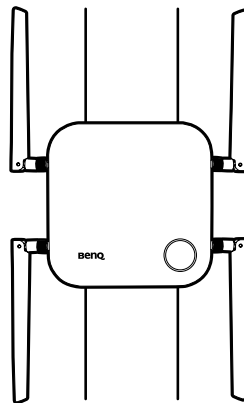
### For ceiling installation

Position the antennas so that they are both pointed downwards at an angle roughly perpendicular to the ceiling:

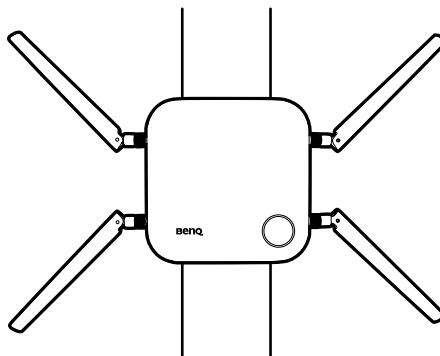


### For ceiling mount installation

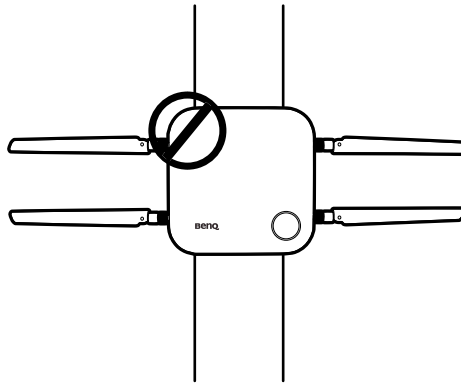
- Position the antennas so that they are both point either upwards or downwards roughly parallel to the ceiling mount:



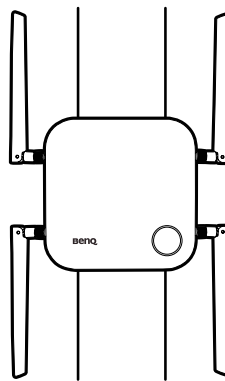
- If you encounter bad signal reception after initial use of the Host you can manually adjust the antennas so that they tilt at a slight angle to maximize signal reception. When doing so, avoid tilting the antennas toward the ceiling mount:



- Avoid positioning the antennas in a horizontal manner, this may result in a weak signal reception:

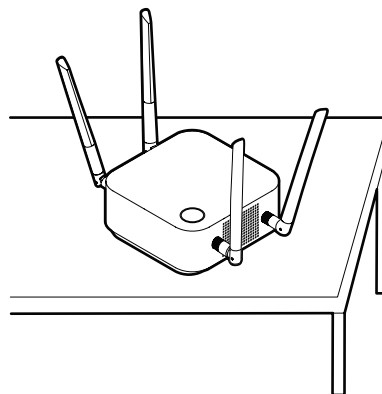


- If the Host is attached to a metallic ceiling mount ensure that the antennas are at least 3 cm away from the metal portion of the ceiling mount:



## For table placement

Position the antennas so that they are both pointed upwards roughly perpendicular to the table:

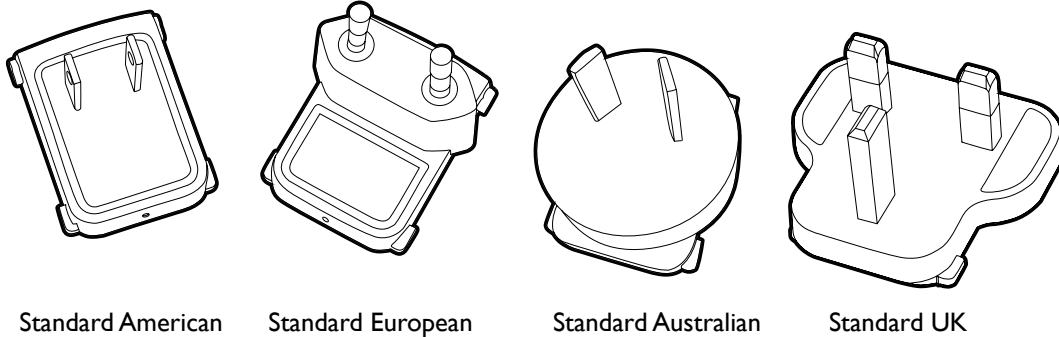


## Connecting the HDMI cable and power

Once the Host has been positioned properly near the display, connect the HDMI cable and power to ensure signal transmission.

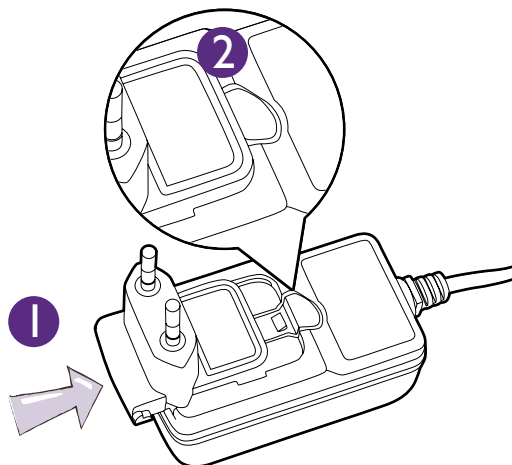
## Assembling the adapter

Every adapter provided in the box includes a plug socket and plugs based on the region in which you purchased the product. Below are images of the standard American, standard European, standard Australian, and standard UK plugs:

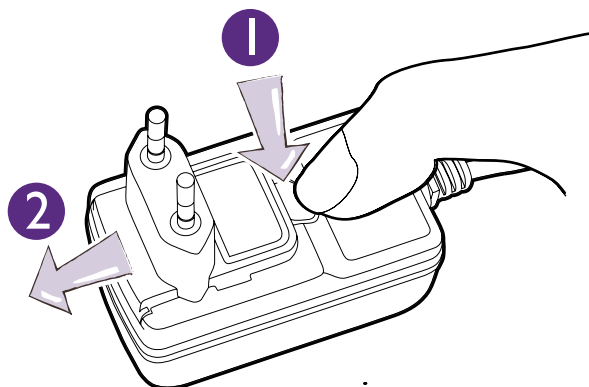


To connect the plug of your choice, follow the steps below.

1. Align and insert the plug into the adapter.
2. Push the plug all the way in until it clips into place.



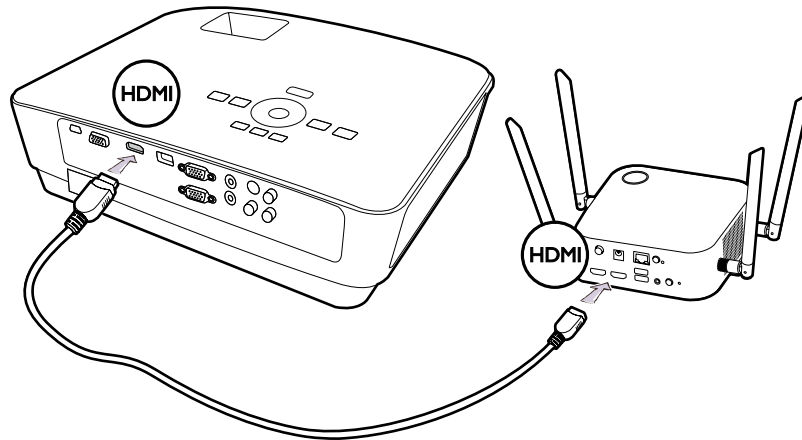
To disconnect the plug, follow the steps below.



1. Push the latch in the middle.
2. Detach the plug by pushing it outward and remove the plug.

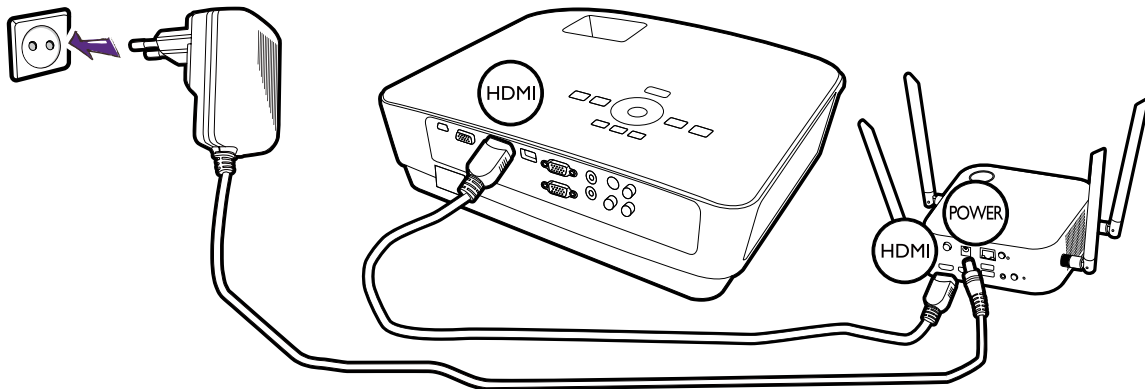
## Connecting the HDMI cable

Connect the HDMI cable to the HDMI out jack of the Host and the HDMI input jack of the projector.



## Power supply via a power adapter

Connect the supplied power adapter to the power jack of the Host, and then plug the other end of the power adapter into a wall socket. The LED indicator on the standby button of the Host lights up static green when the power is supplied. Press the **Power switch** of the Host.



For BenQ IFP (Interactive Flat Panel) products, please have power supplied via a power adapter.



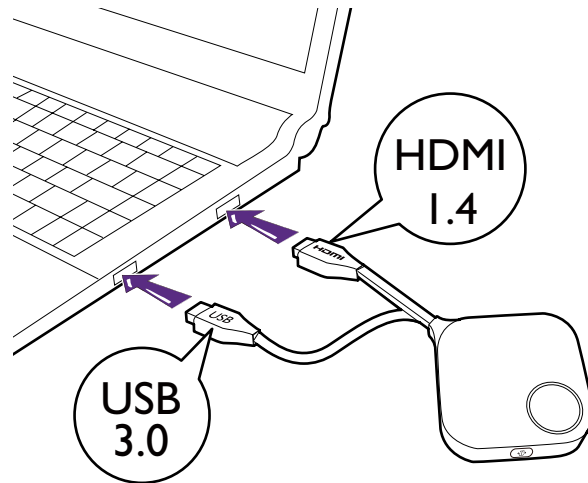
Do not keep the device powered on all the time. For better performance, power off the device for 30 minutes in every 24 hours then restart it.

## LAN connection

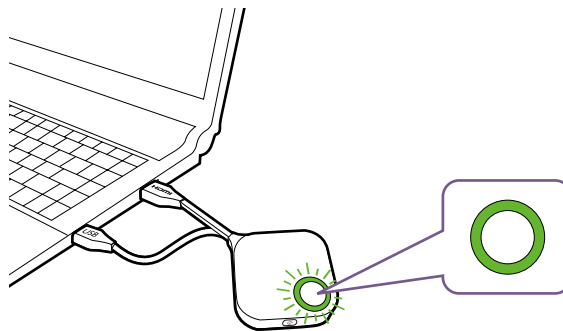
The Host can be connected to a local network or directly to a laptop. The LAN connection can be used to configure your product and update the software. Insert a network cable with RJ-45 connectors into the LAN port and connect the other side to a LAN.

## Setting up and powering a Button

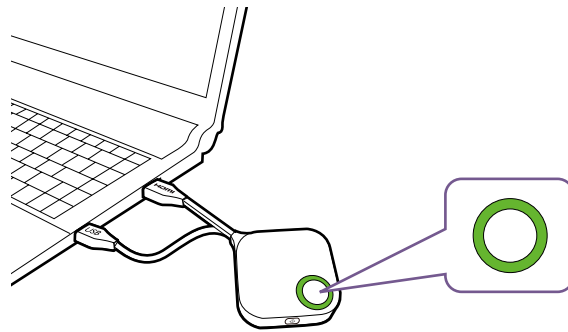
1. Connect the Button's HDMI and USB jacks to the corresponding inputs of a laptop. See the illustration.



2. The LED indicator of the Button will flash green while the Button is starting up.



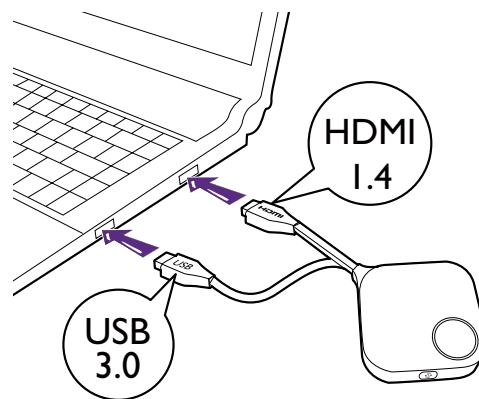
3. When the Button is ready to present, the LED indicator will turn solid green. Press the Present key when the LED indicator turns green.



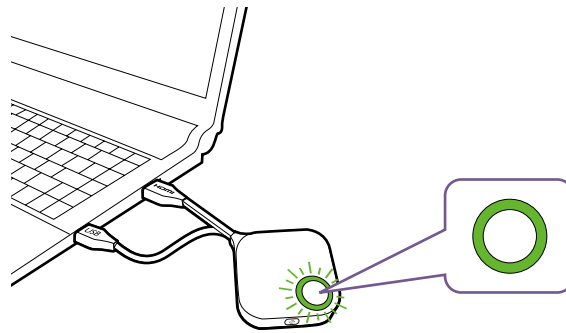
- 
- If the Button encounters problems while pairing with the Host during startup, the LED indicator will flash red. Repeat the previous process again until the LED turns solid green. See [LED indicators of the Button and the Host on page 12](#) for more information on LED behavior.
  - Handle the Button cable with care. Rough handling might cause defects.
  - Pull/Push the plug instead of the cable when inserting or removing Buttons.
- 

If you purchase an additional Button (via a Button Kit), please follow the process described below:

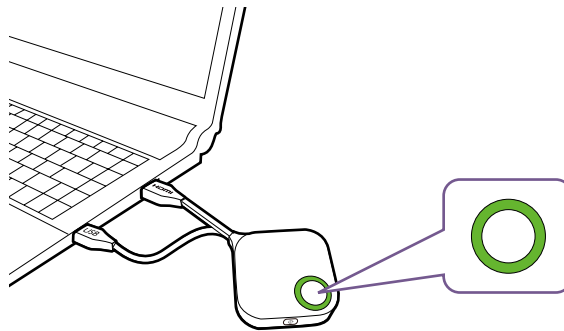
1. Follow the pairing instructions described in [Pairing a Button and Host on page 25](#).
2. Connect the Button's HDMI and USB jacks to the corresponding inputs of a laptop. See the illustration.



3. The LED indicator of the Button will flash green while the Button is starting up.



4. When the Button is ready to present, the LED indicator will turn solid green. Press the Present key when the LED indicator turns green.



- Handle the Button cable with care. Rough handling might cause defects.
- Pull/Push the plug instead of the cable when inserting or removing Buttons.

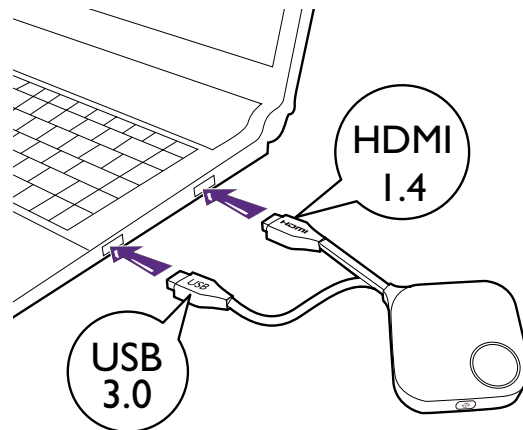


## Pairing a Button and Host

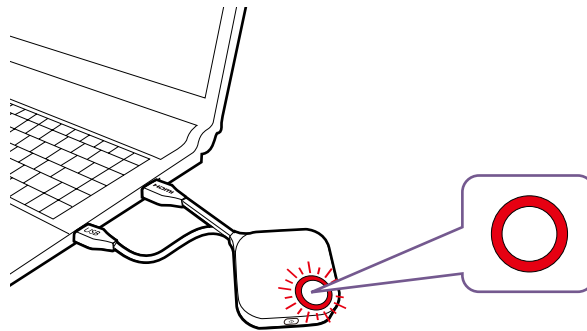
A product set includes a Host and two Buttons, which are paired before shipment. In such a case, you don't need to pair them again. However, if you buy two or more product sets, and you want to pair a Button with a different Host, you need to follow the instruction below. If you buy an additional Button kit, and you want to pair the new Buttons with your Host, you need to follow the instruction below as well.

### When the Host is placed on a table

1. Make sure your Host is ready with power supply. Connect the Button's HDMI and USB jacks to the corresponding inputs of a laptop.



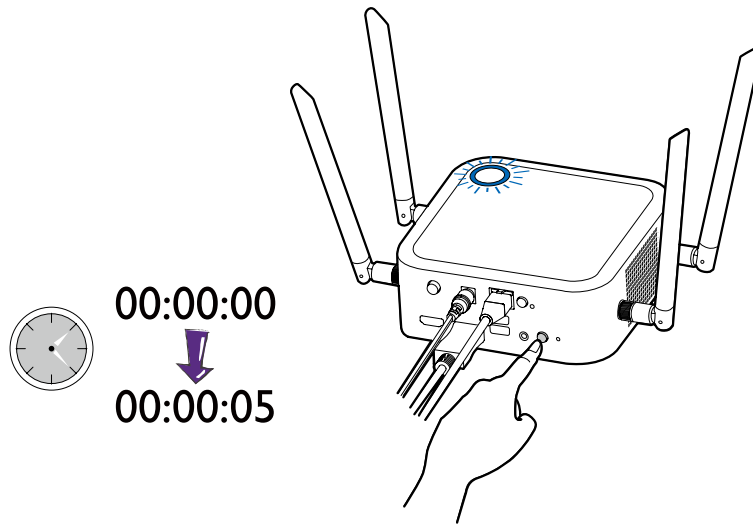
2. When the new Button is connected to the laptop, the LED indicator of the Button will flash red.




If a Button nearby has been paired with a Host before, it will turn static green.

---

3. Press the **PAIRING** key of the Host for five seconds, the LED indicator of the Host will blink blue for two minutes, waiting to pair with a Button.

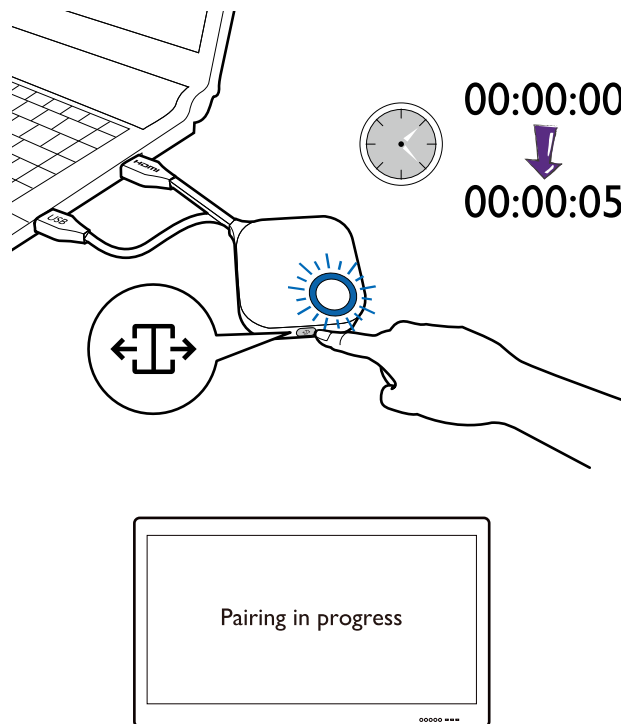


---

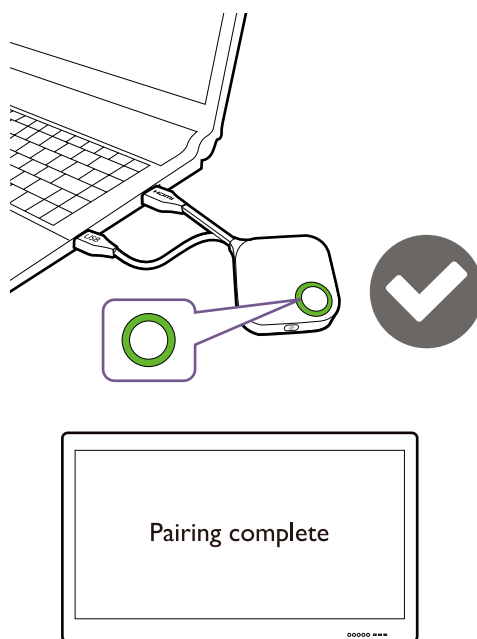
 If the Host is attached to the ceiling so that it is not easy to press the **PAIRING** key, please use the pairing process in the web management interface. Refer to [Pairing on page 50](#) for information.

---

4. Press the split screen key on the side of the Button for five seconds. The LED indicator of the Button will blink blue for about 10 seconds. The pairing process is ongoing. The **“Pairing in progress”** message will be shown on the screen.



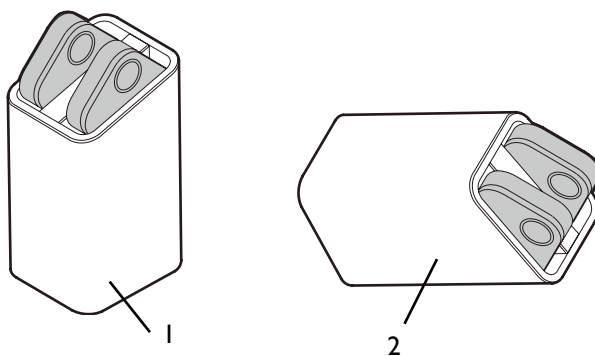
5. The LED indicator of the Button turns static green and a **“Pairing complete”** message will be shown when the Host and Button are successfully paired.



The maximum number of Buttons you can pair with one Host is 32.

## Storing Buttons and USB cable in the cradle

You are provided with two different ways to store the Buttons in the cradle. Place the Buttons in the cradle vertically (1) or horizontally (2). See the illustrations.



## Resetting a Host

Resetting a Host allows you to return the Host to its original factory settings. You may want to reset the Host because of either one of the following reasons:

- You want to clear the web management interface of all changes made to its configurations, such as pairing information, passwords, SSID, etc. and return it back to its default settings. Refer to [Web management on page 36](#) for more information.
- You are unable to access the web management interface (for instance due to an altered or lost password).

Reset the Host using the following steps:

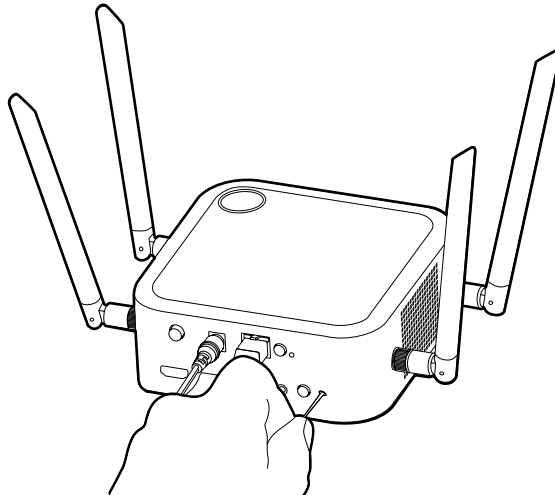
1. Connect the power port on the Host to a power source and wait for at least 90 seconds.



After the Host has been connected to a power source for at least 90 seconds, the Host LED may indicate any one of the statuses described in [LED indicators of the Button and the Host](#). As long as the Host has been connected to a power source for at least 90 seconds, you may proceed to the next step of the resetting process regardless of the status of the Host LED.

---

2. Poke the **RESET** hole at the rear of the Host with a pin for at least 5 seconds.



3. The Host LED will begin quick flashing red (flash red twice every second) for 10 seconds, then light up static white for 3 seconds, indicating that the Host is resetting.
4. Once the Host LED lights up static green the resetting process is complete.



Do not disconnect the Host from its power source at any time during the resetting process.

---

## Resetting a Button

Resetting a Button allows you to return the Button to its original factory settings. You may want to reset a Button because of either one of the following conditions:

- You purchased an additional Button (via a Button Kit) which has not been paired to a Host.
- A Button that was included in the original package has been paired to a different Host (one which was not originally included with the Button in the package), and you want to quickly pair it back to its original Host.
- A Button that was included in the original package has been paired to a different Host (one which was not originally included with the Button in the package), and you want to re-pair the Button to its original Host while the Host is not powered on.

Reset a Button using the following steps:

1. Connect the USB 3.0 connector on the Button to a powered on laptop and wait for at least 30 seconds.

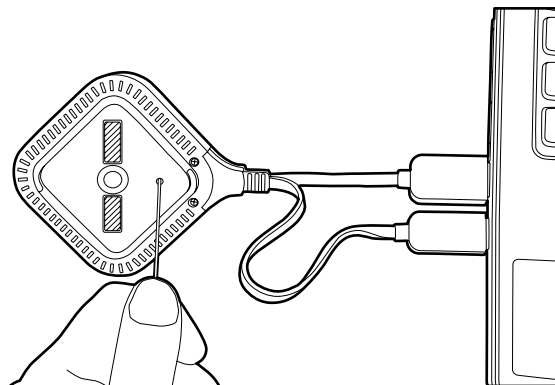


---

After the Button has been connected to a powered on laptop for at least 30 seconds, the Button LED may indicate any one of the statuses described in [LED indicators of the Button and the Host](#). As long as the Button has been connected to a powered on laptop for at least 30 seconds, you may proceed to the next step of the resetting process regardless of the status of the Button LED.

---

2. Poke the **RESET** hole at the bottom of the Button with a pin for at least 5 seconds.



3. The Button LED will begin quick flashing red (flash red twice every second) for 10 seconds, then light up static white for 2 seconds, indicating that the Button is resetting.

4. Once the Button LED lights up static green the resetting process is complete.



---

Do not disconnect the Button from its power source at any time during the resetting process.

---

## Enabling network standby mode

You can set the Host to enter network standby mode after a period of inactivity. To set the time of inactivity, go to **Web Management > Advance Setting > Network Standby**. See [page 55](#) for more information.

To enable network standby mode, do one of the following:

- wait for the Host to enter network standby mode automatically if no wireless devices (e.g., a Button, a mobile device, or a laptop) being connected to the Host's SSID and no data (from any USB devices such as a mouse, a keyboard, or from touch back function) being transmitted to the Host within the set time.
- if there is no wireless devices being connected to the Host's SSID within the set time, press the standby button on the Host to enable network standby mode immediately.

The LED indicator on the Host lights up static white when it is in network standby mode.

The network standby mode is disabled when

- a wireless device is connected to the Host's SSID; or
- data (from any USB devices such as a mouse, a keyboard, or from touch back function) is transmitted to the Host; or
- you press the standby button on the Host.

# Starting and stopping presentations

This section will guide you on how to start and stop a presentation using the product.

## Getting ready

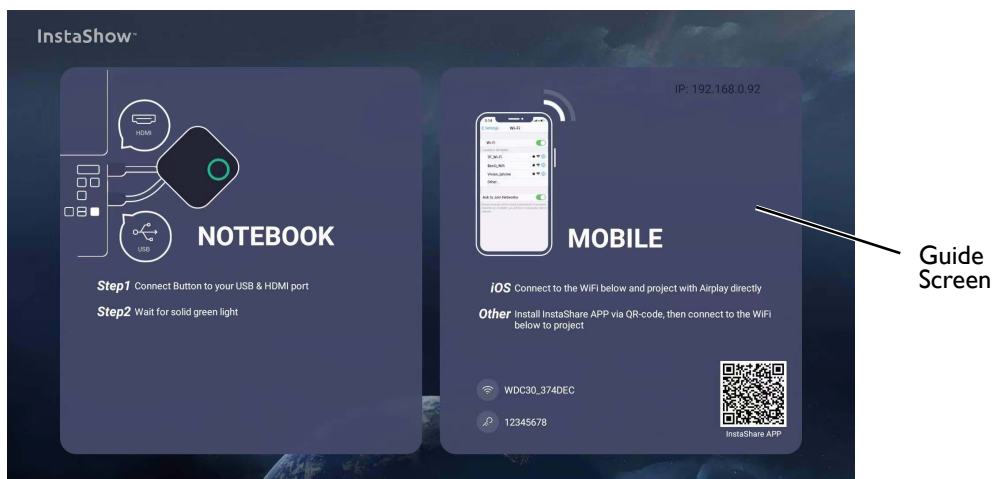
Make sure that all the connected devices have been powered on and ready for the presentation.

As the product could work with different projectors, IFPs, TVs, or monitors with standard HDMI ports, the steps required to start a presentation may vary according to the actual environment and your display specifications. Follow the procedures below and refer to the specified sections for details.

1. To start a presentation, see [Starting presentation on page 30](#) for details.
2. To stop a presentation, see [Idle presentation on page 31](#) for details.
3. To start a split-screen presentation, see [Split screen presentations on page 31](#) for details.
4. To start a presentation with a mobile device, see [Presenting with mobile devices on page 34](#) for details.
5. To control presentations via a touchscreen displays or mouse/keyboard see [Touch back on page 35](#) for details.

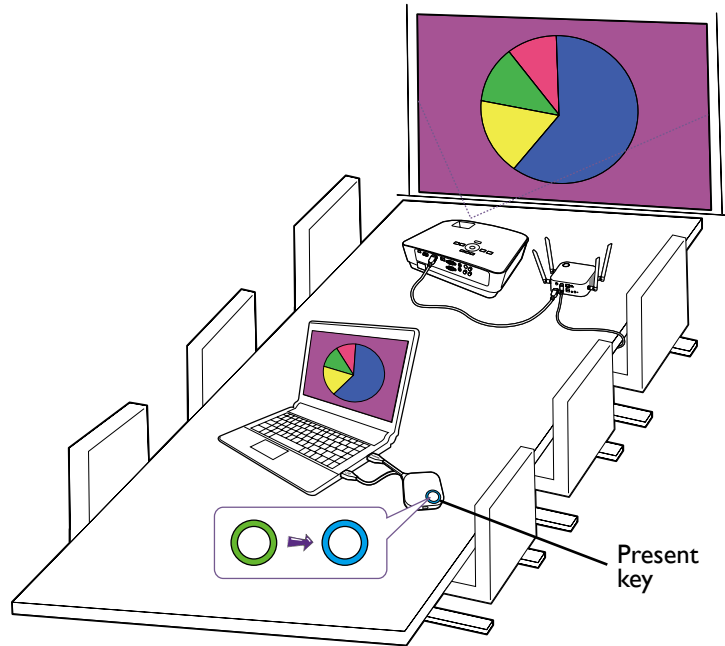
## Starting presentation

1. Make sure power is supplied to the Host. See [Connecting the HDMI cable and power on page 19](#) for more information.
2. Choose the HDMI source corresponding to the Host on the display. You will see the Guide screen.



3. Please follow the instruction on the Guide screen to supply power to the Button. You can also see [Setting up and powering a Button on page 22](#) for more information. The LED indicator on the Button is static green when the Button is connected and working properly.
4. To start a presentation, press the Present key.

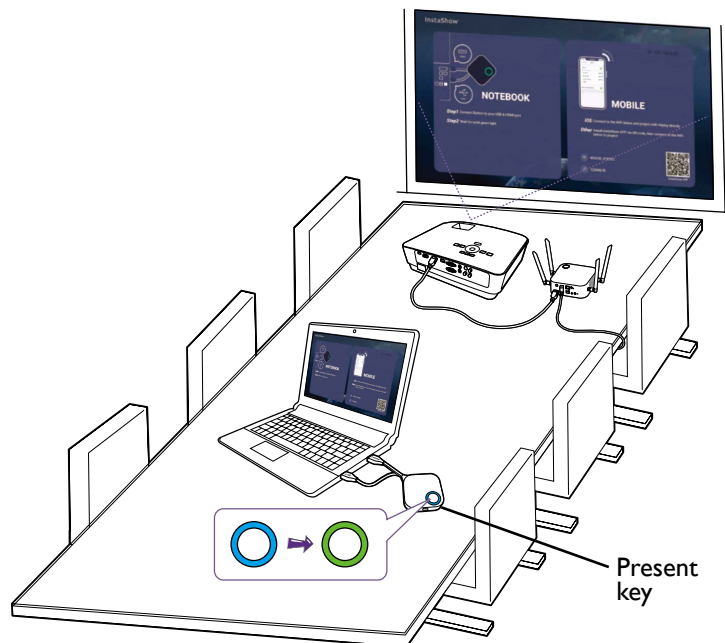
5. The device starts presenting, and the LED indicator of the Button turns static blue.



- Make sure the transmission distance between the Button and Host is within 15 meters and with no obstacles.
- The product supports MacBooks and Windows laptops to mirror an extended desktop.

## Idle presentation

1. To stop a presentation, press the Present key.
2. The device stops presenting, and the LED indicator of the Button turns green.
3. Users can press the Present key to return to the presentation.



## Split screen presentations

The product allows up to 8 users to present simultaneously in a split screen orientation.

## Starting a split screen presentation

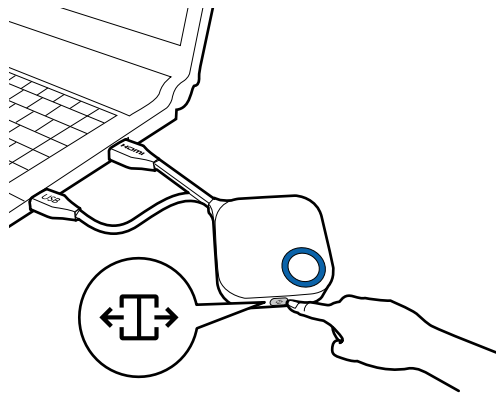
1. Connect a Button to each computer that will be presenting in the split screen presentation. See [Setting up and powering a Button on page 22](#) for more information.



Make sure that all Buttons have already been paired to the Host projecting the presentation. See [Pairing a Button and Host on page 25](#) for more information.

---

2. Start a normal presentation using one of the Host buttons. See [Starting presentation on page 30](#) for more information.
3. Press the split screen button on the Host that started the presentation to enable split screen presentations.



4. Once a notification appears on-screen indicating that the split screen function has been enabled, press the Present key on the Button of the second computer that wants to join the split screen presentation.
5. Repeat step 4 for all other users that want to join the split screen presentation.



- Only up to 8 users are simultaneously supported in a split screen presentation.
  - The layout of the split screen presentation will be dictated by the amount of users in the presentation.
  - If split screen is not enabled by the initial Button, all subsequent connections by other Buttons will be full screen presentations.
-



## Switching from a split screen to a full screen presentation

Once in a split screen presentation you can switch to a full screen presentation of any of the participant's screen by pressing the split screen button on the Button of the computer that wants to present in a full screen.

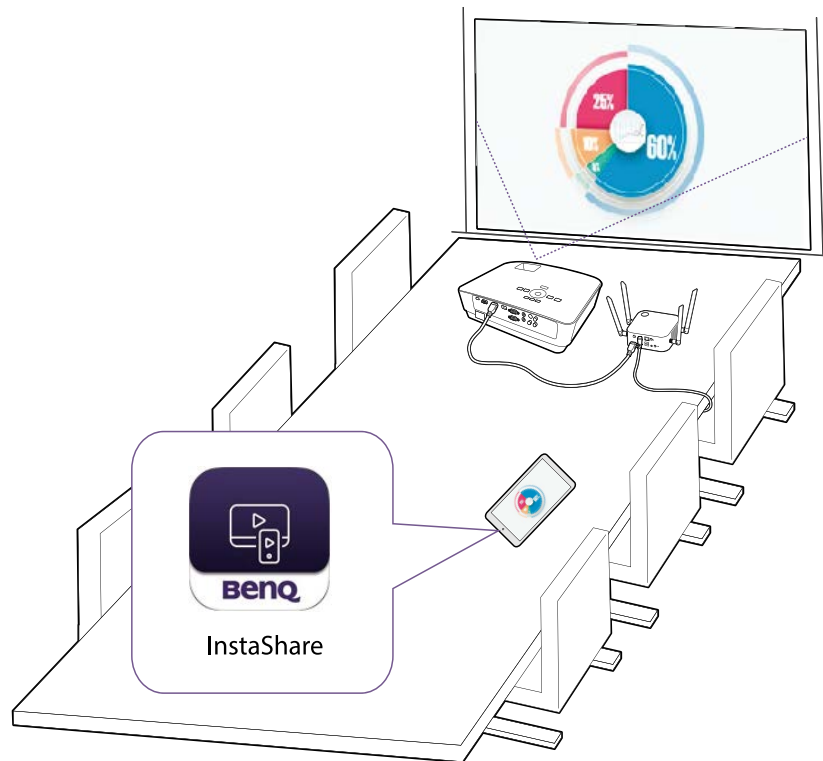


To return to a split screen presentation repeat the steps in [Starting a split screen presentation on page 32](#).

## Presenting with mobile devices

Users with mobile devices can connect their mobile devices to the Host and make a presentation via the InstaShare app by following the steps below:

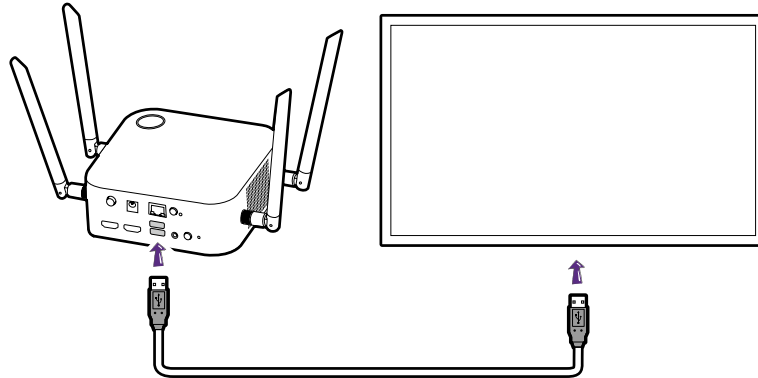
1. Install the InstaShare app on your mobile device using the QR code located on the guide screen.
2. The name of the Host is displayed on your mobile device's Wi-Fi menu, select it to make a Wi-Fi connection. No password is required.
3. Select a desired function and follow the on-screen instructions to project.



Functions and interface of the app may be updated without prior notice.

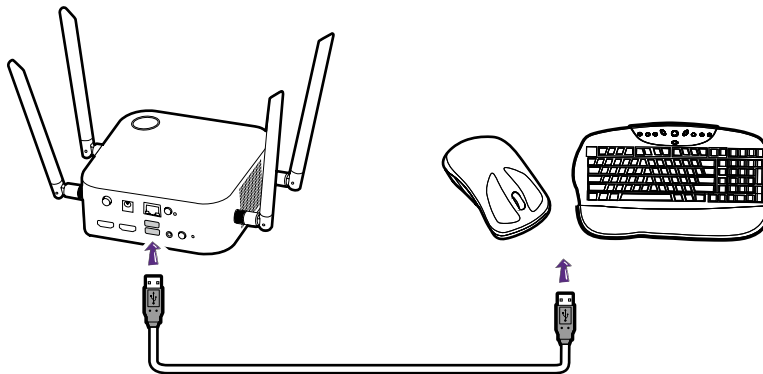
## Touch back

When a Host is connected to a touchscreen display and a PC is presenting via a Button, you can use a USB Type-A cable to connect any of the USB ports located at the rear of the Host to the touch input USB port of the display to control the interface of the PC remotely via touch gestures on the display.



The product only supports touch back for Windows-based PCs. It does not support touch back for MacBooks or smartphones connected via the InstaShare app.

For presentations that do not feature a touchscreen display, you can connect a USB mouse and/or USB keyboard to any of the USB ports located at the rear of the Host to control the interface of the presenting computer and input text remotely via the mouse/keyboard.



# Web management

The product is equipped with a web management interface that enables you to configure its features through a browser such as Google Chrome (version 49.0.26), Internet Explorer (version 8.0), or Firefox (version 46.0.1).



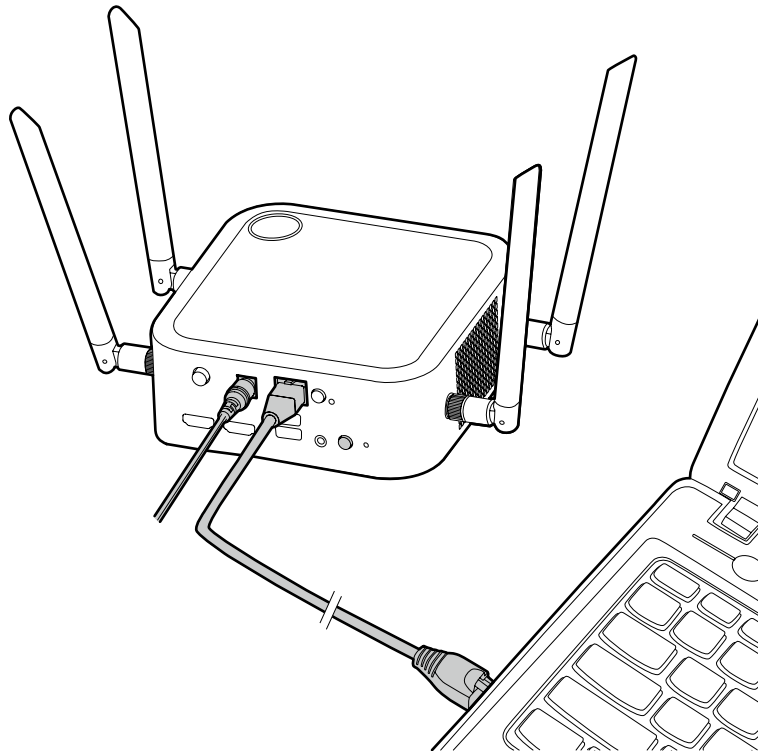
The features may vary according to different firmware versions.

---

## Accessing the web management interface

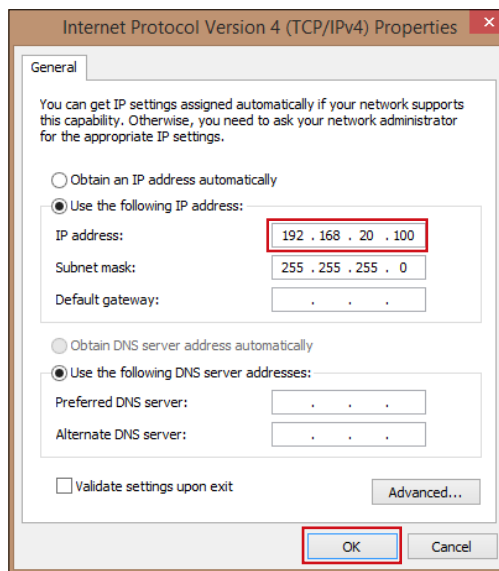
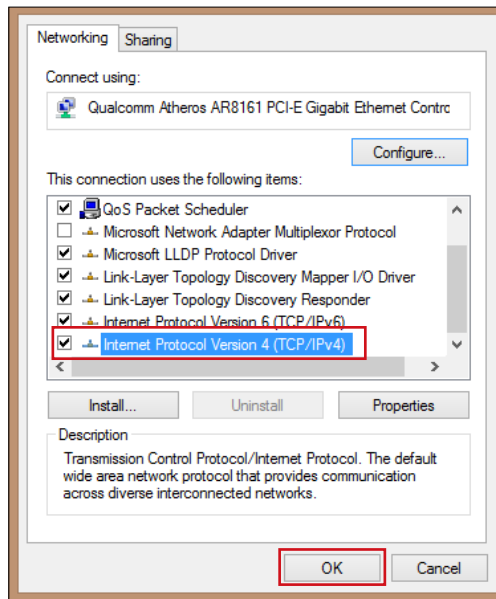
### Logging into the web management interface via direct connection

1. Connect your Host directly to a laptop using a network cable (RJ-45) and to a power source using the power adapter.



2. Wait until the LED indicator on your Host lights up static green.

3. The default IP address of your Host is 192.168.20.1 Change your laptop's IP address to 192.168.20.x (e.g. 192.168.20.100).



4. On your browser, enter the IP address: 192.168.20.1 At the first access to the web management interface or after a firmware upgrade, you may be prompted to change the password to proceed. Enter the default password (0000) as the old password, and set a new one.

Please input the old password

Please input the new password

Please input the password again

Reset

If you are not requested to change the password on the login page, enter the default user name (admin) and your password (as changed earlier).

Please input account

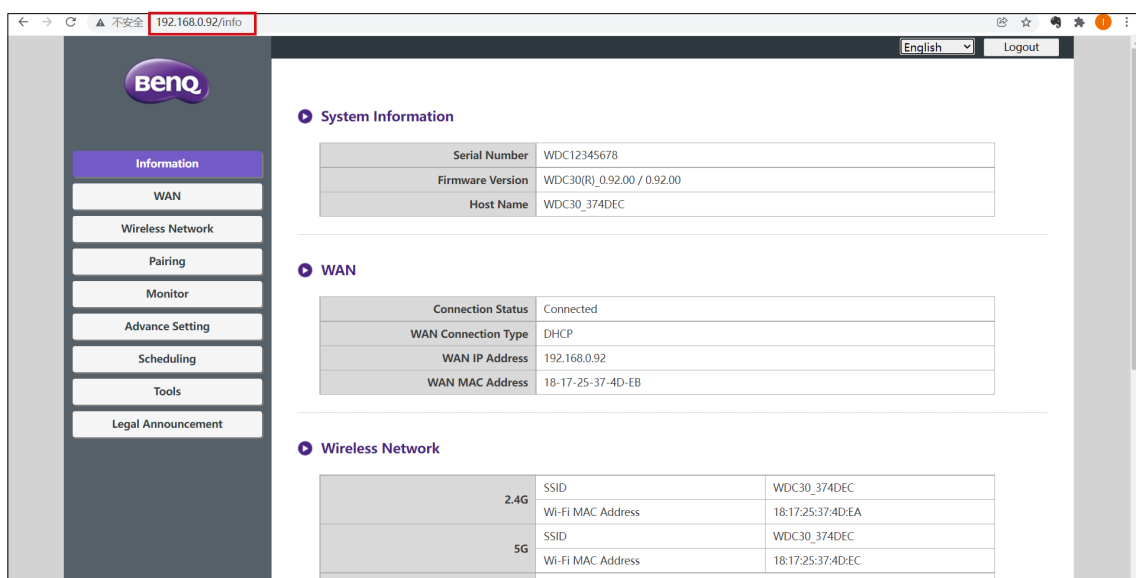
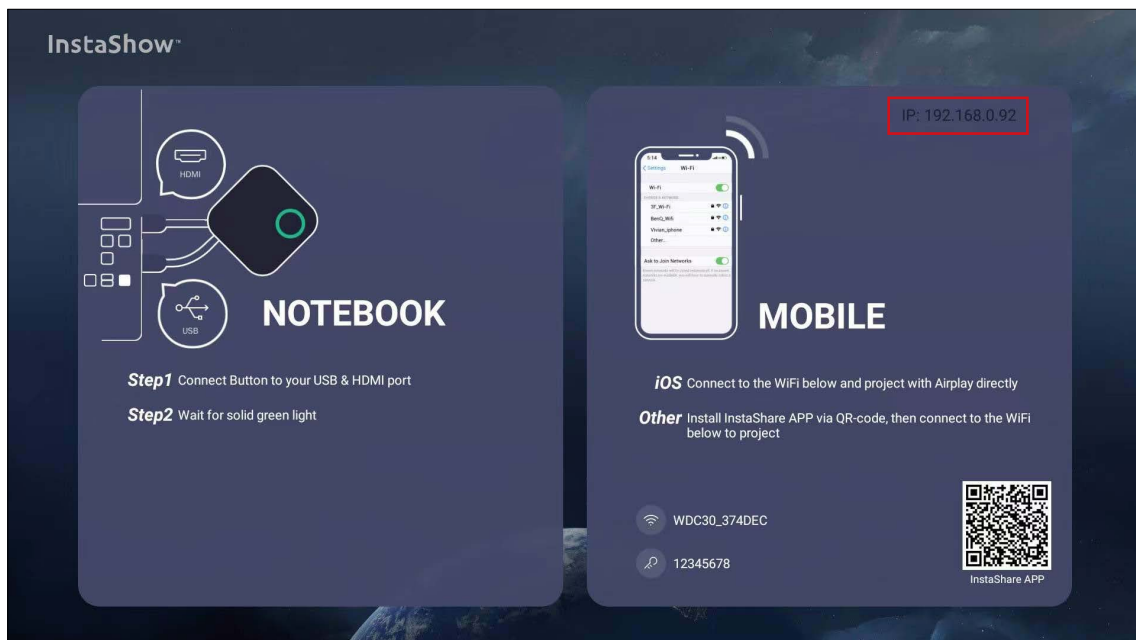
Please input password

Login

5. You will successfully log into the web management interface.

## Logging into the web management interface via LAN

If your Host is connected to your LAN, you can enter the IP Address shown on the screen via a web browser.

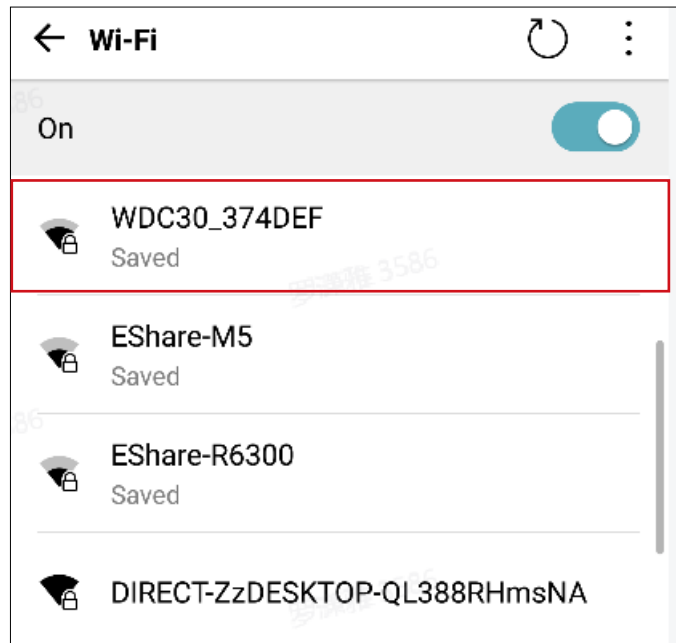


## Logging into the web management interface via a wireless network

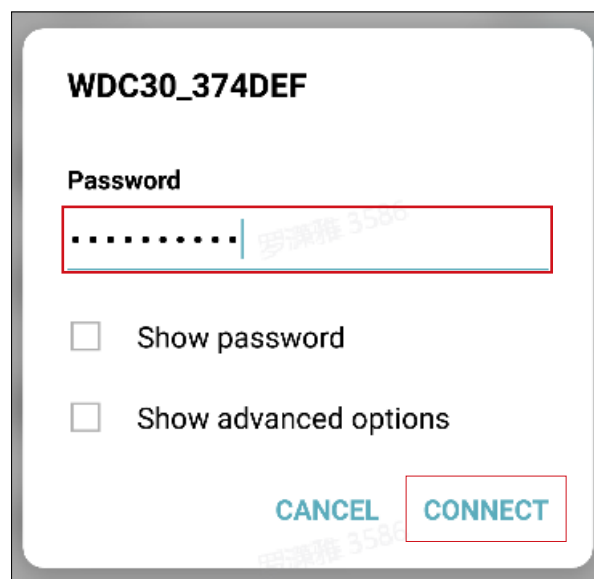
The product supports 802.11 ax/ax/n. It is compatible with most devices with Wi-Fi capability (e.g. laptop or mobile devices), you can locate the Host via the WDC30\_XXXXXX SSID (shown in the Guide/Idle screen) in your laptop or mobile device's wireless network menu and connect to it. The default password is the same as the name of the SSID (for example, if the SSID is "WDC30\_374DEF", the password will be "WDC30\_374DEF"). When the device is connected to the Host, enter the IP Address, "192.168.0.92" in a web browser, then enter the user name and password as shown in step 4 of [Logging into the web management interface via direct connection on page 36](#).

The following is an example of how you can log into the web management interface via a mobile device with IEEE 802.11 ax/ax/n.

1. Go to **Settings > Wi-Fi**, and you can find the SSID of your Host: WDC30\_374DEF.



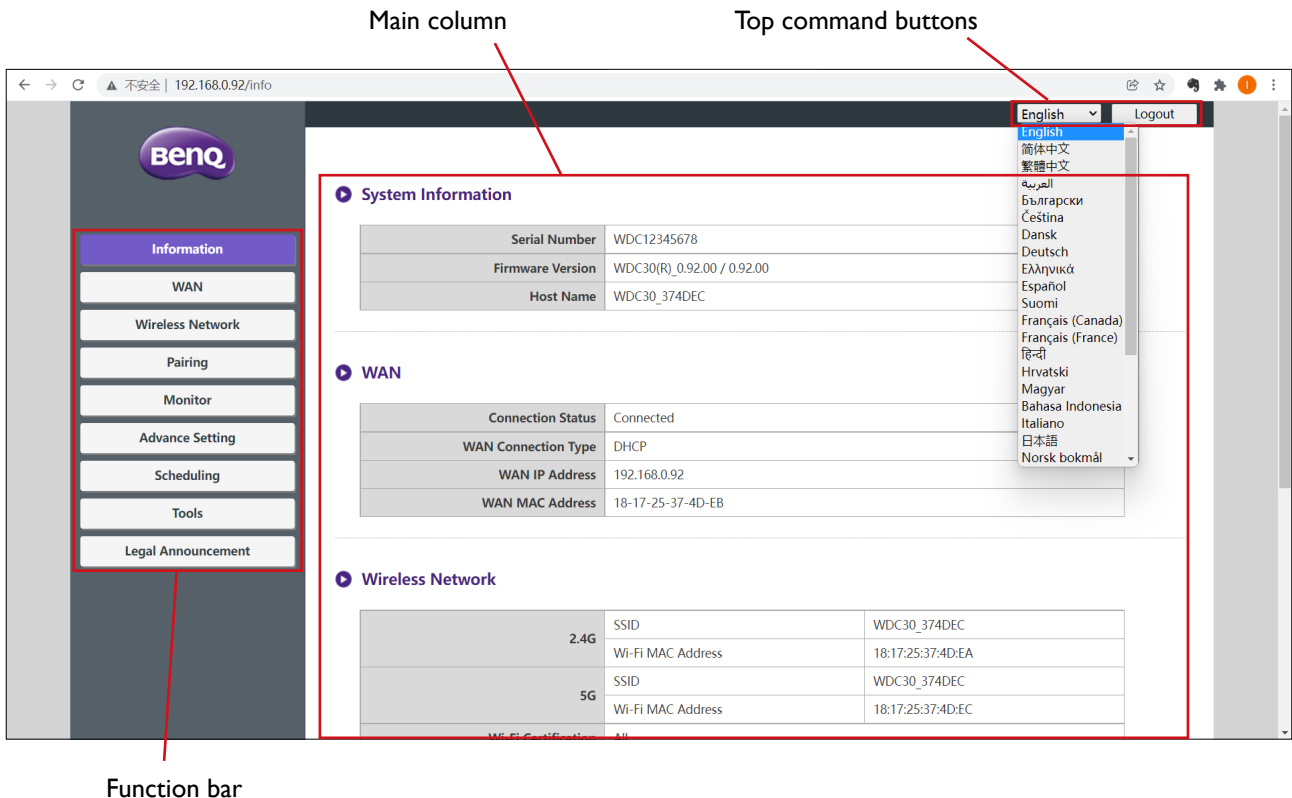
2. Enter the default password "WDC30\_374DEF" and press **Connect**.



3. Access the web management interface following step 4-5 of [Logging into the web management interface via direct connection on page 36](#).

## Getting started


You can now use the web management interface to configure various settings of your Host.



## Top command buttons

### Change language

1. The default language is English. To change the interface language, go to the language settings panel and you can see all available languages.
2. Click the language you want to switch to and your new language will be set.
3. Once a new language has been set both the web management interface and the product's OSD will feature the new language.

 Supported languages vary by country/region where you purchase.

### Logging out

Click **Logout** on the upper right corner.

### Function bar

The function bar shows the settings menus available in the web management interface.

### Main column

The main column shows the detailed content from the function bar.



# Information

Click **Information** and you will see detailed information for **System Information**, **WAN**, **Wireless Network**, **My Screen**, and **Screen Message**.

The screenshot shows the BenQ settings application. On the left is a navigation menu with options: Information (highlighted), WAN, Wireless Network, Pairing, Monitor, Advance Setting, Scheduling, Tools, and Legal Announcement. The main content area is divided into sections:

- System Information:** A table with fields: Serial Number (WDC12345678), Firmware Version (WDC30(R)\_0.92.00 / 0.92.00), and Host Name (WDC30\_374DEC).
- WAN:** A table with fields: Connection Status (Connected), WAN Connection Type (DHCP), WAN IP Address (192.168.0.92), and WAN MAC Address (18-17-25-37-4D-EB).
- Wireless Network:** A table with fields for 2.4G and 5G bands, including SSID (WDC30\_374DEC), Wi-Fi MAC Address (18:17:25:37:4D:EA), and Wi-Fi Certification (All).
- My Screen:** Fields for Guide Screen and Idle Screen, both set to 'Original'.
- Screen Message:** A text input field.

At the bottom right of the main content area are 'Apply' and 'Cancel' buttons.

You can change the **Host Name** under Wireless Network SSID.

The SSID is relevant to Host Name.

If the SSID (host name) is changed, you need to pair the Button(s) to the Host again.

You can change the background image for the Host's guide screen and/or idle screen by selecting **Custom** in the **Guide Screen** or **Idle Screen** fields, then clicking the **Select Image** button that appears, and then navigating to and selecting the image file on your local folder you want as either the Hosts **Guide Screen** or **Idle Screen**.

## My Screen

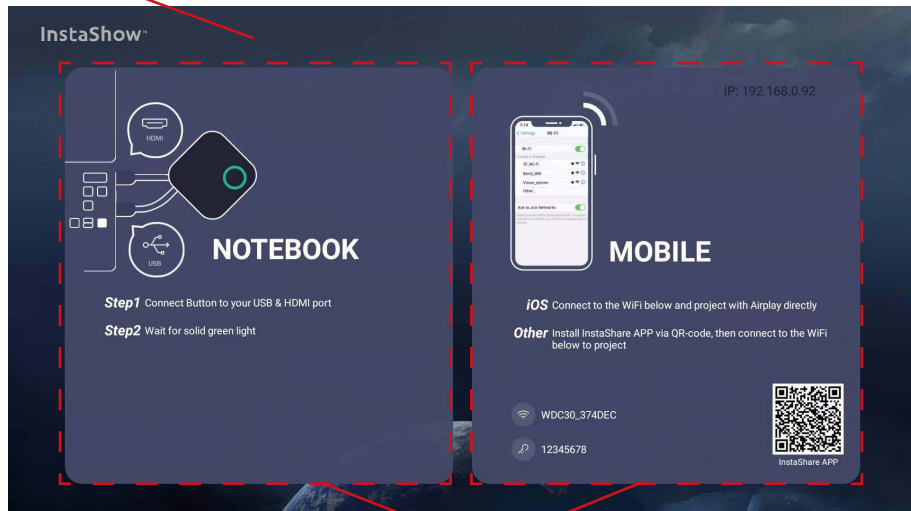
Guide Screen	Custom	Select Image	<input type="checkbox"/> Tutorial Hide
Idle Screen	Custom	Select Image	<input type="checkbox"/> Tutorial Hide



- To hide the tutorial boxes on either the **Guide Screen** or **Idle Screen**, check the **Tutorial Hide** box.
- To revert to the default **Guide Screen** or **Idle Screen**, select **Original** in the respective screen's field.

Background Image

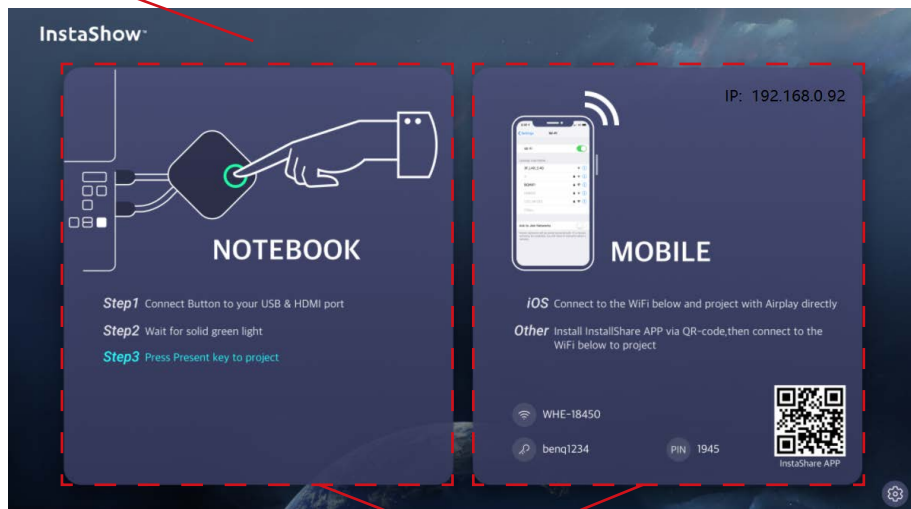
Guide Screen



Tutorial Boxes

Background Image

Idle Screen

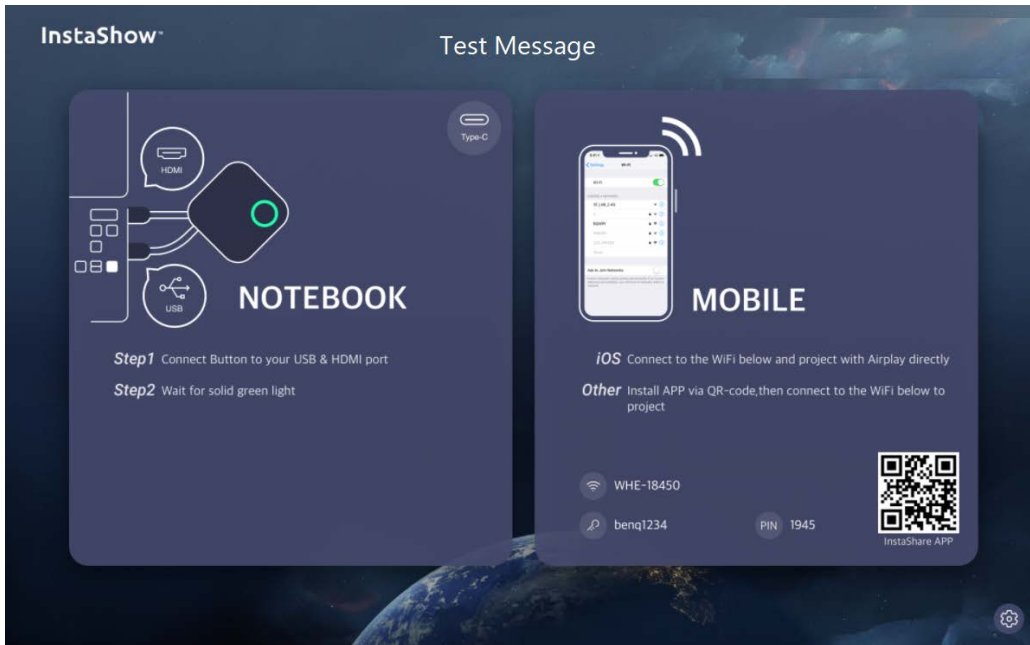


Tutorial Boxes

You can enter messages under **Screen Message**. After filling in a message, press **Apply** to proceed. Your message will be shown at the top of the Guide/Idle Screen.

**Screen Message**

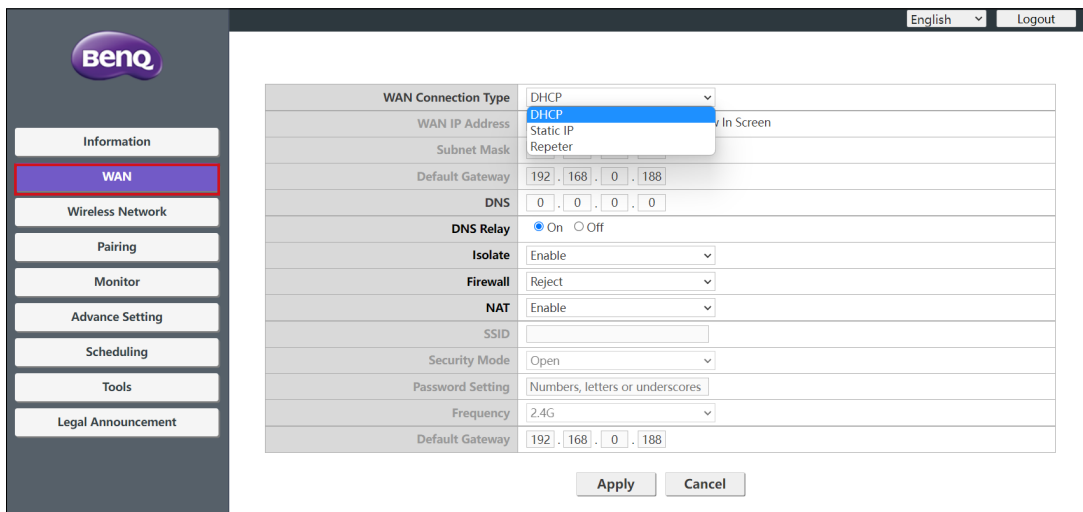
Apply
Cancel



One line (with up to 100 alphanumeric or Chinese characters in the line) is allowed for **Screen Message**.

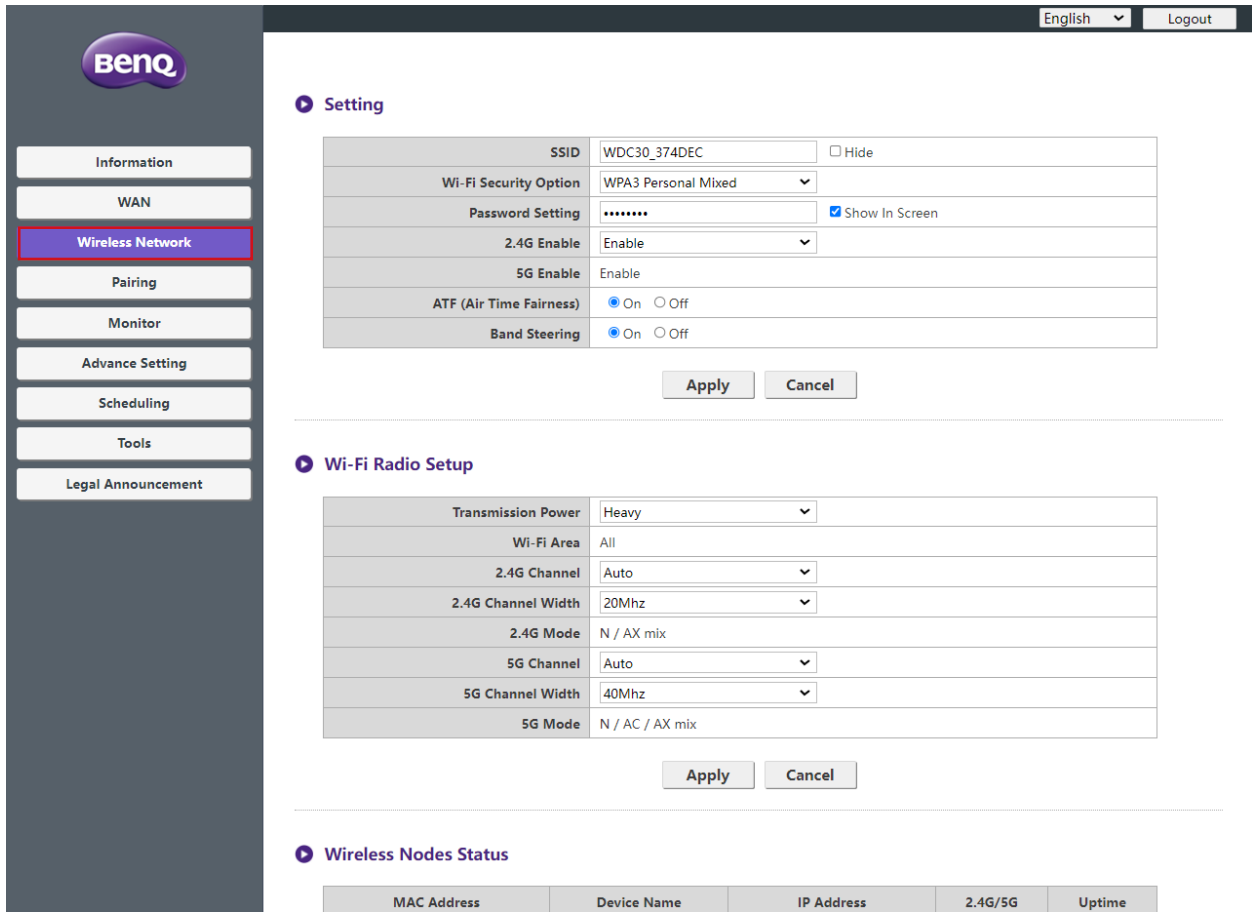
## WAN

Click **WAN** and you will see the default **WAN IP Address** of the Host. The default connection type is DHCP which acquires the IP Address from your DHCP server of your network. If you want to change your **WAN IP Address**, choose **Static IP** under **WAN Connection Type**. Press **Apply** after changing the **WAN IP Address**.



# Wireless Network

Click **Wireless Network** and you will see the **Setting**, **Wi-Fi Radio Setup**, and **Wireless Nodes Status** menu for the Host.



## Setting

The Wi-Fi SSID for the Host is displayed in the SSID field.

The SSID is relevant to the **Host Name** of **Information > System Information** menu, to change the SSID will also refresh the **Host Name**.

If you prefer not to show SSID and password, check **Hide**.

### Setting

SSID	WDC30_374DEF	<input type="checkbox"/> Hide
Wi-Fi Security Option	WPA2 Personal Mixed	
Password Setting	.....	<input checked="" type="checkbox"/> Show In Screen
2.4G Enable	Enable	
5G Enable	Enable	
ATF (Air Time Fairness)	<input checked="" type="radio"/> On <input type="radio"/> Off	
Band Steering	<input checked="" type="radio"/> On <input type="radio"/> Off	

**Wi-Fi Security Option** provides the user **WPA2 Personal Mixed** and **WPA3 Personal Mixed** options for the Host's wireless connection when users access the web management interface via a wireless network.

▶ **Setting**

SSID	WDC30_374DEC	<input type="checkbox"/> Hide
Wi-Fi Security Option	WPA3 Personal Mixed	
Password Setting	WPA2 Personal Mixed	<input checked="" type="checkbox"/> Show In Screen
2.4G Enable	Enable	
5G Enable	Enable	
ATF (Air Time Fairness)	<input checked="" type="radio"/> On <input type="radio"/> Off	
Band Steering	<input checked="" type="radio"/> On <input type="radio"/> Off	

**WPA2 Personal Mixed, WPA3 Personal Mixed** allows users with various encryption methods to connect to the Host, which may be needed for users with older wireless devices.



The Wi-Fi security options described above only applies to the Wi-Fi connection used to access the web management interface via a wireless network. The Wi-Fi connection used for data transfer between the Host and Buttons utilizes a fixed WPA2-PSK security setting which cannot be changed.

**Password Setting** allows you to change the password of the Host. If the password is changed, you need to pair the Button(s) to the Host again.

You can choose the available frequencies for the Host's Wi-Fi signal in the **2.4G Enable** and **5G Enable** fields. A 2.4G Wi-Fi signal is a signal that features a larger coverage range but slower data speeds and is more commonly used by older mobile devices, while a 5G Wi-Fi signal features faster data speeds at a smaller range. To enable or disable either 2.4G Wi-Fi signals by selecting **Enable** or **Disable** in the **2.4G Enable** fields.

▶ **Setting**

SSID	WDC30_374DEF	<input type="checkbox"/> Hide
Wi-Fi Security Option	WPA2 Personal Mixed	
Password Setting	.....	<input checked="" type="checkbox"/> Show In Screen
2.4G Enable	Enable	
5G Enable	Enable	
ATF (Air Time Fairness)	<input checked="" type="radio"/> On <input type="radio"/> Off	
Band Steering	<input checked="" type="radio"/> On <input type="radio"/> Off	



- Certain mobile devices are unable to access 5G Wi-Fi signals due to hardware limitations. If your mobile device is unable to connect to the Host via Wi-Fi, select **Enable** in the **2.4G Enable** field.
- Both **2.4G Enable** and **5G Enable** can be enabled at the same time.
- 5G is not able to disable due to all the operations of InstaShow Buttons rely on 5G Wi-Fi.

**ATF (Air Time Fairness)** allow faster clients to have more airtime than slower clients that boost the overall network performance. However this may make slower clients even slower.

▶ Setting

SSID	WDC30_374DEF	<input type="checkbox"/> Hide
Wi-Fi Security Option	WPA2 Personal Mixed	▼
Password Setting	.....	<input checked="" type="checkbox"/> Show In Screen
2.4G Enable	Enable	▼
5G Enable	Enable	
ATF (Air Time Fairness)	<input checked="" type="radio"/> On <input type="radio"/> Off	
Band Steering	<input checked="" type="radio"/> On <input type="radio"/> Off	

**Band Steering** is a feature that balances dual-band capable wireless clients to connect to the faster 5GHz Wi-Fi, and leave the 2.4GHz Wi-Fi less-crowded for those clients who support 2.4GHz only; therefore to improve Wi-Fi performance for all the clients. When using **Band Steering** you will only have to connect one SSID ("WDC30\_XXXXXX") with one password.

▶ Setting

SSID	WDC30_374DEF	<input type="checkbox"/> Hide
Wi-Fi Security Option	WPA2 Personal Mixed	▼
Password Setting	.....	<input checked="" type="checkbox"/> Show In Screen
2.4G Enable	Enable	▼
5G Enable	Enable	
ATF (Air Time Fairness)	<input checked="" type="radio"/> On <input type="radio"/> Off	
Band Steering	<input checked="" type="radio"/> On <input type="radio"/> Off	

After you configure all the **Wireless Network > Setting** items, press **Apply** to proceed.

▶ Setting

SSID	WDC30_374DEF	<input type="checkbox"/> Hide
Wi-Fi Security Option	WPA2 Personal Mixed	▼
Password Setting	.....	<input checked="" type="checkbox"/> Show In Screen
2.4G Enable	Enable	▼
5G Enable	Enable	
ATF (Air Time Fairness)	<input checked="" type="radio"/> On <input type="radio"/> Off	
Band Steering	<input checked="" type="radio"/> On <input type="radio"/> Off	

## Wi-Fi Radio Setup

In the **Transmission Power** field you can set the strength of the Wi-Fi signal with the available options being of **Heavy** for a strong Wi-Fi signal (20 dbm for 2.4G; 15 dbm for 5G), **Standard** for a standard Wi-Fi signal (18 dbm for 2.4G; 12 dbm for 5G), and **ECO** (15 dbm for 2.4G; 10 dbm for 5G) for a weaker, energy saving signal.

### Wi-Fi Radio Setup

Transmission Power	Heavy	<input type="checkbox"/> Support DFS channels
Wi-Fi Area	Heavy	<input type="checkbox"/> Support 116, 120, 124, 128
2.4G Channel	Standard	
2.4G Channel Width	ECO	
2.4G Mode		
5G Channel	Auto	
5G Channel Width	40Mhz	
5G Mode	N / AC / AX mix	

Apply Cancel

In the **2.4G Channel** and **5G Channel** fields you can configure the Host to automatically select the wireless channel with the best performance for either signal during the initial setup of the Host by selecting **Auto**, or you can select a wireless channel manually. The default **2.4G Channel** and **5G Channel** setting for the Host is **Auto**.

### Wi-Fi Radio Setup

Transmission Power	Heavy
Wi-Fi Area	ALL
2.4G Channel	Auto
2.4G Channel Width	Auto
2.4G Mode	1
5G Channel	2
5G Channel Width	3
5G Mode	4
	5
	6

Cancel

### Wi-Fi Radio Setup

Transmission Power	Heavy
Wi-Fi Area	ALL
2.4G Channel	Auto
2.4G Channel Width	20Mhz
2.4G Mode	N / AX mix
5G Channel	Auto
5G Channel Width	Auto
5G Mode	36
	40
	44

Cancel



**Support DFS Channel** and **Support 116,120,124,128** selections may vary and depend on regulation applied for each country/region.

In the **2.4G Channel Width** and **5G Channel Width** fields you can configure the channel width for your 2.4G and/or 5G Wi-Fi signal. The available options for **2.4G Channel Width** are **20MHz** and **40MHz**, while the available options for **5G Channel Width** are **20MHz**, **40MHz**, and **80MHz**. The default channel width for **2.4G Channel** is **20MHz** while the default channel width for **5G Channel** is **40MHz**.

► **Wi-Fi Radio Setup**

Transmission Power	Heavy
Wi-Fi Area	ALL
2.4G Channel	Auto
2.4G Channel Width	20Mhz
2.4G Mode	20Mhz
5G Channel	40Mhz
5G Channel Width	40Mhz
5G Mode	N / AC / AX mix

► **Wi-Fi Radio Setup**

Transmission Power	Heavy
Wi-Fi Area	ALL
2.4G Channel	Auto
2.4G Channel Width	20Mhz
2.4G Mode	N / AX mix
5G Channel	Auto
5G Channel Width	40Mhz
5G Mode	20Mhz



The supported wireless channels listed vary according to wireless regulations of the country/region which is listed in the **Wi-Fi Area** field.

The **5G Mode** enabled with **N / AC / AX mix** (802.11n, 802.11ac and 802.11ax mixed) with best compatibility to serve client with different wireless ability.

► **Wi-Fi Radio Setup**

Transmission Power	Heavy
Wi-Fi Area	ALL
2.4G Channel	Auto
2.4G Channel Width	20Mhz
2.4G Mode	N / AX mix
5G Channel	Auto
5G Channel Width	40Mhz
5G Mode	N / AC / AX mix



The Wi-Fi standard for the 2.4G Wi-Fi signal in the **2.4G Mode** field is set to **N / AX mix** and cannot be configured.

After you configure all the **Wireless Network** settings, press **Apply** to proceed.



### Wi-Fi Radio Setup

Transmission Power	Heavy
Wi-Fi Area	ALL
2.4G Channel	Auto
2.4G Channel Width	20Mhz
2.4G Mode	N / AX mix
5G Channel	Auto
5G Channel Width	40Mhz
5G Mode	N / AC / AX mix

## Wireless Nodes Status

The **Wireless Nodes Status** sub-menu lists all the devices connected to the Host via Wi-Fi indicates their **MAC Address**, **Device Name**, **IP Address**, **Wi-Fi channel used (2.4G/5G)**, and connection time (**Uptime**).

### Wireless Nodes Status

MAC Address	Device Name	IP Address	2.4G/5G	Uptime
D4:9C:DD:38:83:84	WDC30T-388384	192.168.168.67	5G	45s
0C:7A:15:A1:EA:2D	EShare-TP-LXY	192.168.168.24	5G	18s

## Pairing

Click **Pairing** and you will see **Pairing** and **Pairing Status**.

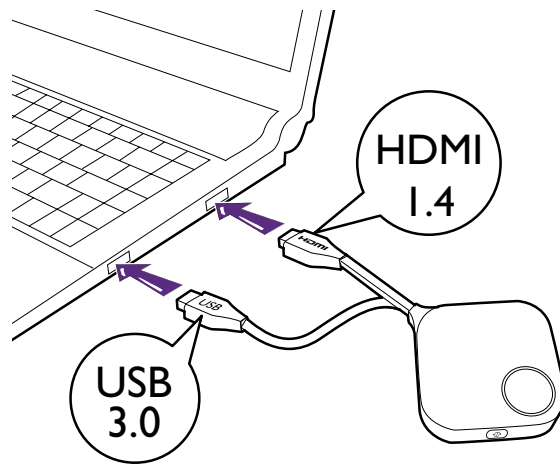
### Pairing

### Pairing Status

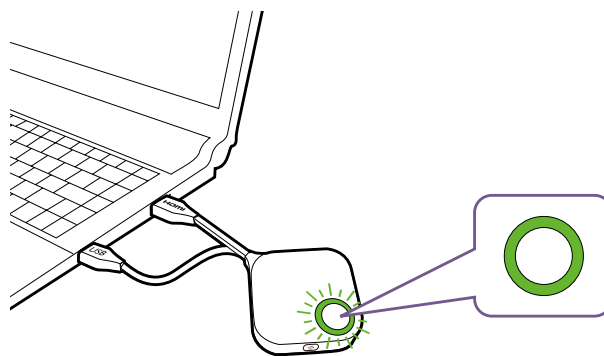
Connected Status	TX Serial Number	TX MAC Address	TX Firmware Version	Authorization Status	Delete
Connected	WDC30T00B0M12W00079	D4:9C:DD:38:83:84	WDC30(T)_0.51.26	Authorized	

**Pairing** is used when the Host is attached to the ceiling as it is not easy to press the **PAIRING** key of the Host when the device is high on the ceiling. You can pair a Button and Host via the web management interface.

I. Connect the Button's HDMI and USB jacks to the corresponding ports of a laptop.



2. When the Button is successfully connected to the laptop, the LED indicator of the Button will blink green.



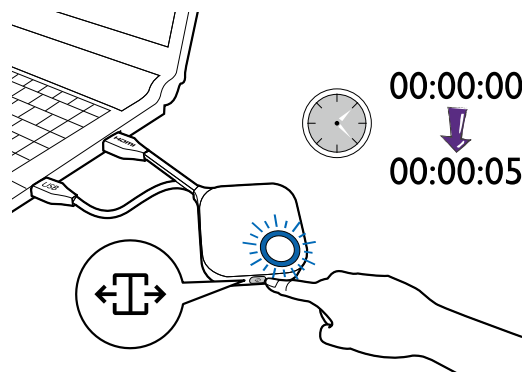
3. Make sure the Host is properly connected to a power source.

4. Press **Start pairing** to pair the Host to the Button via the web management interface, you will have two minutes to pair with the Button.

• Pairing

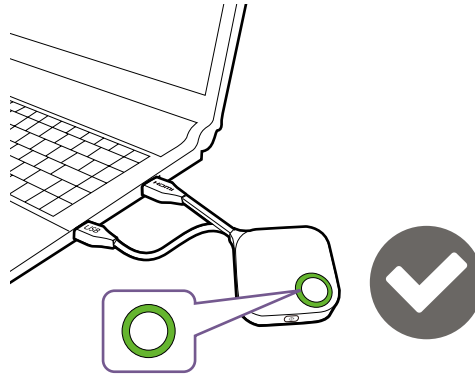
Start pairing

5. Press the split screen key on the side of the Button for five seconds. The LED indicator of the Button will blink blue for about 10 seconds. The pairing process is ongoing. A **“Pairing in progress”** message will be shown on the screen.





6. The LED indicator of the Button will turn static green when the Host and Button are successfully paired.



- Images are for reference only. Each product features a different serial number.
- The maximum number of Buttons you can pair with one Host is 32.

7. You may press **Stop pairing** anytime to stop the pairing process.

▶ Pairing

Stop pairing

Pairing remaining time: 104s

# Monitor

Click **Monitor** to adjust **Monitor Output Setting**.

**Primary Screen output resolution, Secondary output resolution** configures the Host's output resolution for video broadcast by the Host. When **Primary Screen output resolution, Secondary output resolution** mode is set to **Auto** the Host will select the output resolution based on the connected display's native timing, or you can select an output resolution manually.

## Monitor Output Setting

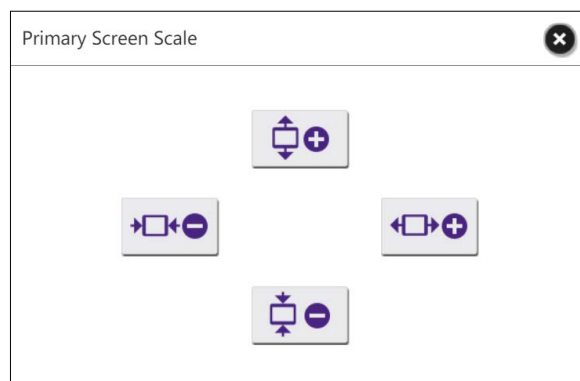
Primary Screen output resolution	Auto
Primary Screen Scale	Auto
Secondary output resolution	3840x2160p60
Secondary Screen Scale	3840x2160p50
Dual Screen Cast Setting	1920x1080p60
	1920x1080p50
	1920x1080p30
	1920x1080p24
	720x480p59

**Primary Screen Scale, Secondary Screen Scale** allows users to adjust the borders of the Host's video output so that it properly fits the screen of the connected display. This setting is mainly intended for users who connect the Host to a touchscreen display, so that the edges of the video align to the edges of the display's screen to ensure the accuracy of touch gestures. To adjust the **Primary Screen Scale, Secondary Screen Scale** setting, click the **Adjustment** button, then use the toggle buttons to scale the video to fit the screen.

## Monitor Output Setting

Primary Screen output resolution	Auto
Primary Screen Scale	Adjustment
Secondary output resolution	Auto
Secondary Screen Scale	Adjustment
Dual Screen Cast Setting	Duplicate

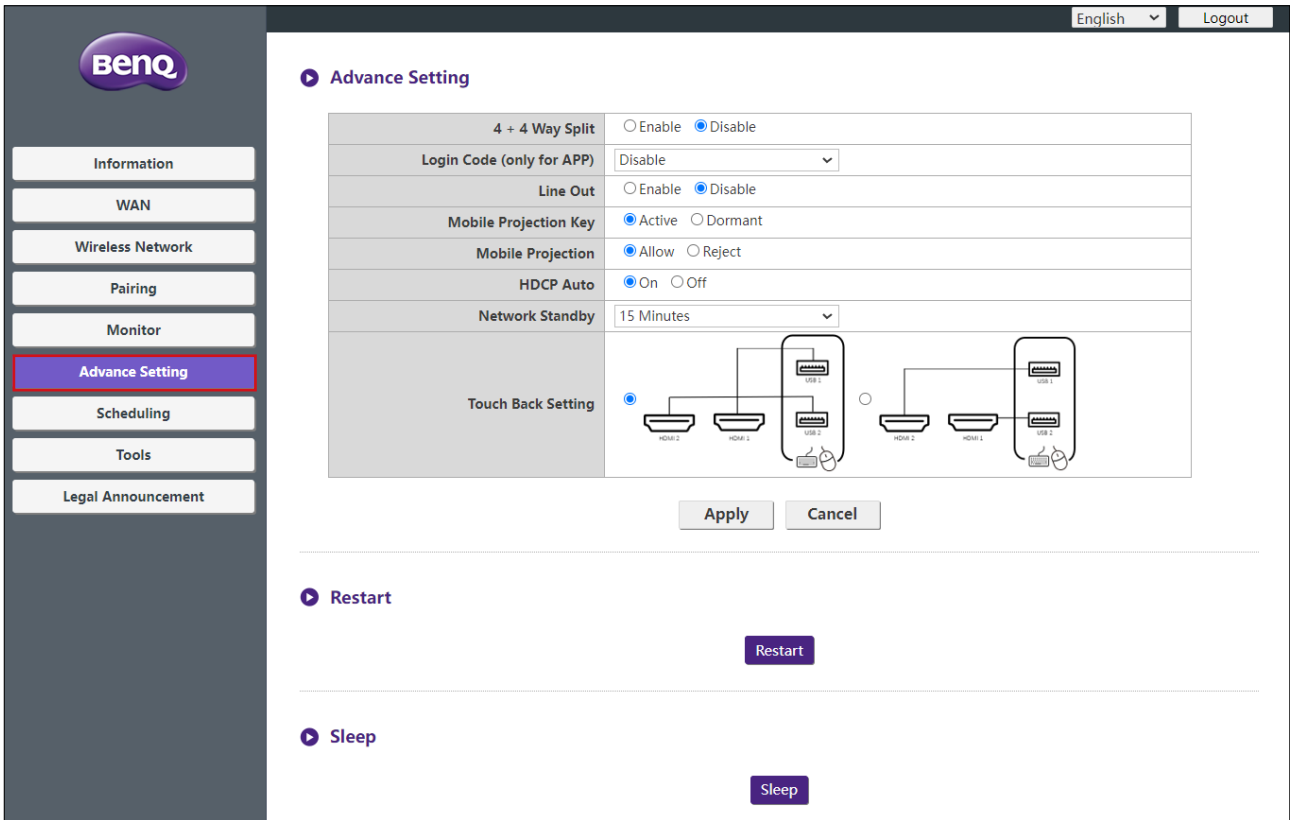
Apply Cancel



**Dual Screen Cast Setting** is a feature to define the output screen among 2 HDMI output (HDMI 1 as Primary and HDMI 2 as Secondary). Default setting is **Duplicate** which means Secondary screen has the same output screen of Primary Screen. In **Duplicate** mode, 4 users can simultaneously project. In **Extend** mode, it can support up to 8 users in Primary and Secondary screen.

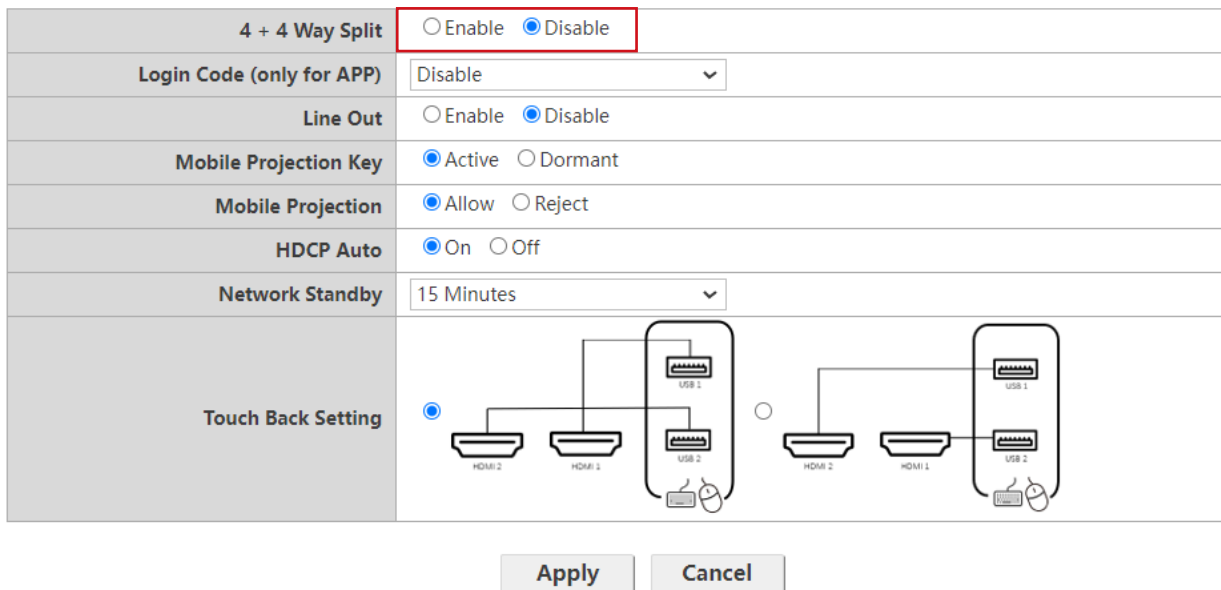
# Advance Setting

Click **Advance Setting** to adjust **4 + 4 Way Split**, **Login Code (only for APP)**, **Line Out**, **Mobile Projection Key**, **Mobile Projection**, **HDCP Auto**, **Network Standby** and **Touch Back Setting**.



**4 + 4 Way Split** enables or disables split screen presentations and has the same function as the split screen button on a Button. See [Split screen presentations on page 31](#) for more information split screen presentations.

## ▶ Advance Setting



**Login Code (only for APP)** allows you to set a login password for connections by mobile devices which will appear on the guide screen. The default setting for this field is **Disable** which means that no login password is needed for mobile devices to connect to the Host. To set a custom login password for mobile devices, select **Custom** and then enter the password you want in the field to the right of the **Login Code (only for APP)** field. To set an automatically generated login password select **Random**.

▶ **Advance Setting**

4 + 4 Way Split	<input type="radio"/> Enable <input checked="" type="radio"/> Disable
Login Code (only for APP)	Disable ▼
Line Out	Custom
Mobile Projection Key	Random
Mobile Projection	Disable
HDCP Auto	<input checked="" type="radio"/> On <input type="radio"/> Off
Network Standby	15 Minutes ▼

**Line Out** is a port that allow user to connect to speaker through 3.5mm audio jack. When Line Out is set to Enable, the HDMI 1 and HDMI 2 will not output the audio signal. When Line is set to Disable, the audio will be output according to projected screen and active HDMI port.

▶ **Advance Setting**

4 + 4 Way Split	<input type="radio"/> Enable <input checked="" type="radio"/> Disable
Login Code (only for APP)	Disable ▼
Line Out	<input type="radio"/> Enable <input checked="" type="radio"/> Disable
Mobile Projection Key	<input checked="" type="radio"/> Active <input type="radio"/> Dormant
Mobile Projection	<input checked="" type="radio"/> Allow <input type="radio"/> Reject
HDCP Auto	<input checked="" type="radio"/> On <input type="radio"/> Off
Network Standby	15 Minutes ▼

**Mobile Projection Key** is a special feature design for meeting Host to allow or forbid BYOD device to start their presentation. This feature is used for highly confidential needed meeting with BenQ designated InstaShow TX Buttons to prevent the wireless presentation being sniffed by malicious hackers.

When **Mobile Projection Key** is set to Active, the company IT can press **Mobile Projection** button at the RX Host' I/O Panel to allow all clients(include BYOD and mobile devices) to join into presentation via InstaShare and wireless display protocols or just allow TX buttons. When **Mobile Projection Key** is set to **Dormant**, the **Mobile Projection Key** is locked to set.

▶ **Advance Setting**

4 + 4 Way Split	<input type="radio"/> Enable <input checked="" type="radio"/> Disable
Login Code (only for APP)	Disable ▼
Line Out	<input type="radio"/> Enable <input checked="" type="radio"/> Disable
Mobile Projection Key	<input checked="" type="radio"/> Active <input type="radio"/> Dormant
Mobile Projection	<input checked="" type="radio"/> Allow <input type="radio"/> Reject
HDCP Auto	<input checked="" type="radio"/> On <input type="radio"/> Off
Network Standby	15 Minutes ▼

**Mobile Projection** is linked to **Mobile Projection** at RX Host's I/O Panel. When sets to **Allow**, all the clients(include BYOD and mobile devices) can start projection via InstaShare or other supported wireless display protocols. When sets to **Reject**, only TX Buttons are allowed to project their screens. The Standby and Guide Screen will also be changed by this setting.

▶ **Advance Setting**

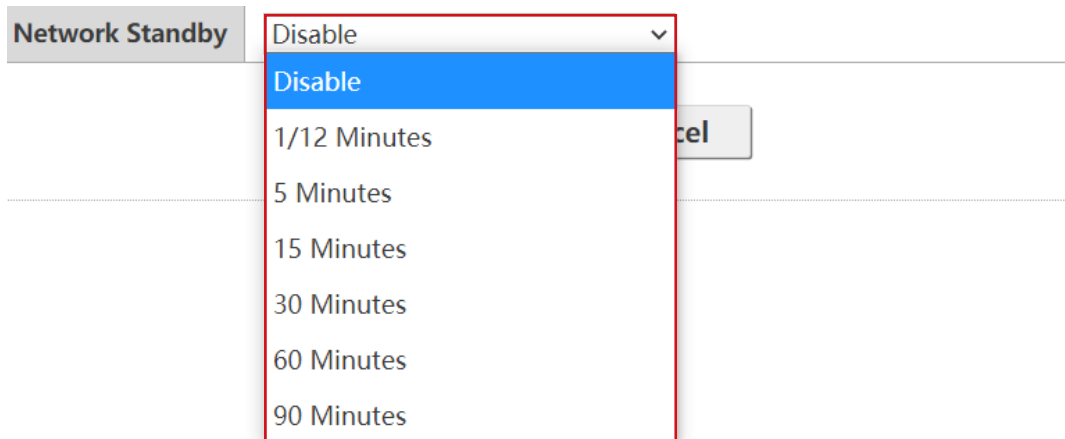
4 + 4 Way Split	<input type="radio"/> Enable <input checked="" type="radio"/> Disable
Login Code (only for APP)	Disable
Line Out	<input type="radio"/> Enable <input checked="" type="radio"/> Disable
Mobile Projection Key	<input checked="" type="radio"/> Active <input type="radio"/> Dormant
Mobile Projection	<input checked="" type="radio"/> Allow <input type="radio"/> Reject
HDCP Auto	<input checked="" type="radio"/> On <input type="radio"/> Off
Network Standby	15 Minutes

**HDCP Auto** is a security setting that allows you configure whether or not HDCP digital copy protection is automatically enabled for the content output by the Host. The default setting for this field is **On**, which means that HDCP copy protection will be automatically enabled by Host for content that features HDCP copy protection and disabled for content that does not feature HDCP copy protection. To change the setting so that HDCP copy protection is always enabled by Host select **Off**.

▶ **Advance Setting**

4 + 4 Way Split	<input type="radio"/> Enable <input checked="" type="radio"/> Disable
Login Code (only for APP)	Disable
Line Out	<input type="radio"/> Enable <input checked="" type="radio"/> Disable
Mobile Projection Key	<input checked="" type="radio"/> Active <input type="radio"/> Dormant
Mobile Projection	<input checked="" type="radio"/> Allow <input type="radio"/> Reject
HDCP Auto	<input checked="" type="radio"/> On <input type="radio"/> Off
Network Standby	15 Minutes

**Network Standby** allows you to set the time of inactivity before the Host enters network standby mode.

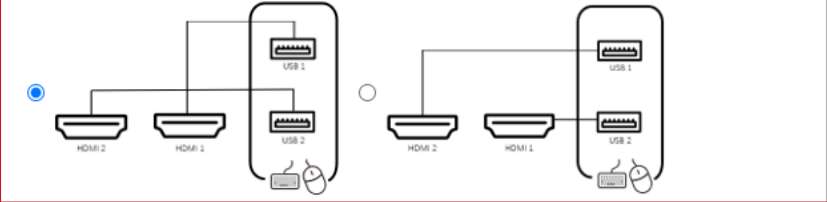
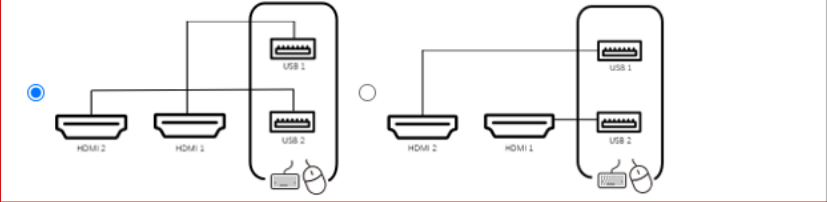


**Touch Back Setting**

The Host supports dual touch screen back to projected device's screen. Default setting allows

HDMI 1 mapping to USB 1 and HDMI 2 mapping to USB 2. IS can set to another setting (HDMI 2 mapping to USB 1 and HDMI 1 mapping to USB 2) in further when needed.

▶ **Advance Setting**

<b>4 + 4 Way Split</b>	<input type="radio"/> Enable <input checked="" type="radio"/> Disable
<b>Login Code (only for APP)</b>	Disable ▼
<b>Line Out</b>	<input type="radio"/> Enable <input checked="" type="radio"/> Disable
<b>Mobile Projection Key</b>	<input checked="" type="radio"/> Active <input type="radio"/> Dormant
<b>Mobile Projection</b>	<input checked="" type="radio"/> Allow <input type="radio"/> Reject
<b>HDCP Auto</b>	<input checked="" type="radio"/> On <input type="radio"/> Off
<b>Network Standby</b>	15 Minutes ▼
<b>Touch Back Setting</b>	<input checked="" type="radio"/>  <input type="radio"/> 

After you configure all the **Advance Setting** items, press **Apply** to proceed.

If you want to restart the Host, click **Restart** and the Host will restart.

▶ Restart

Restart

If you want to place the Host in sleep mode, click **Sleep**.

▶ Sleep

Sleep

---

 To wake the Host from sleep mode, press the standby button on the top of the Host.

---

## Scheduling

You can change the schedule by clicking **Scheduling**. You can set **System Time** and **Periodical Restart**.

You can select your **Time Zone** and the **NTP Server** from which the time is obtained from Internet. When **Auto Date and Time** is set to **Disable**, you can manually set the **Date** and **Time**. The time settings will be saved to internal memory accordingly.



## ▶ System Time

Time Zone	London (GMT+00:00) ▼
Auto Date and Time	<input checked="" type="radio"/> Enable <input type="radio"/> Disable
Set Date	Format: day month year
Set Time	Format: hr:min:sec

You can check **Enable** to set **Periodical Restart**. You can also set restart time and day.

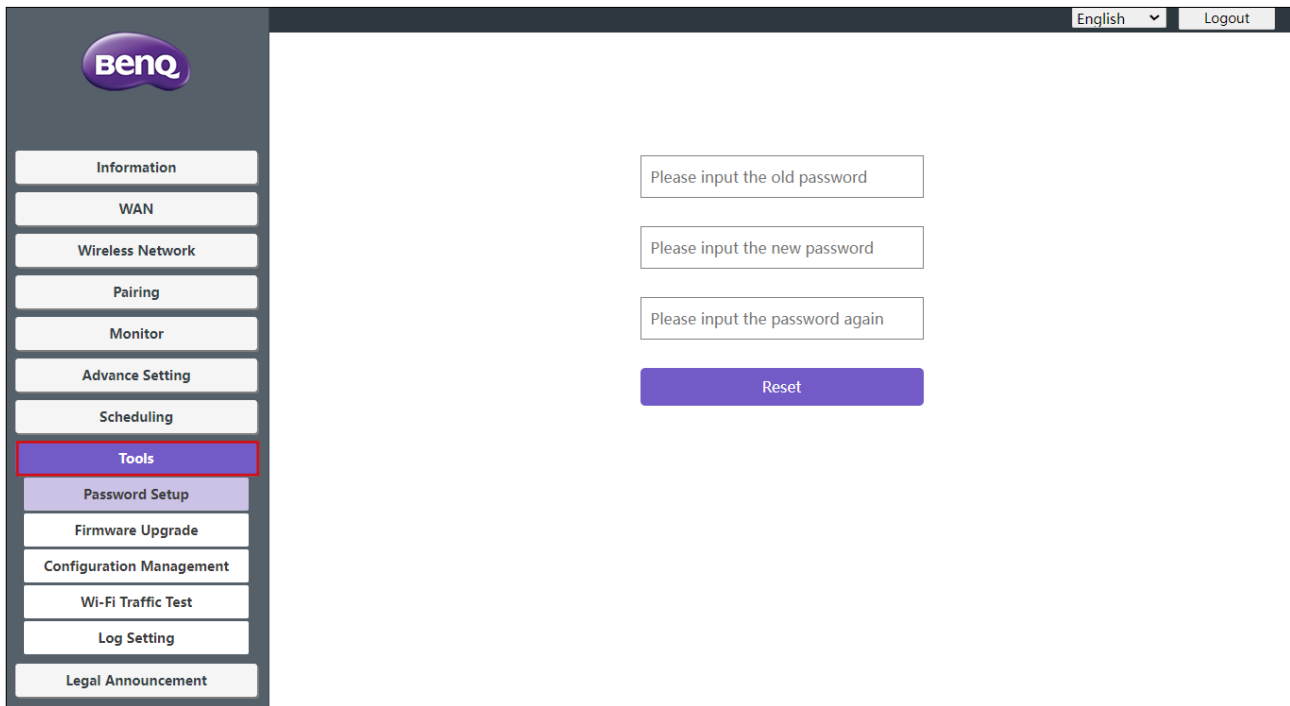
## ▶ Periodical Restart

Current Time	Fri, 18 01 2013 18:56:41		
Enable	<input type="radio"/> Enable <input checked="" type="radio"/> Disable		
Sun.	Boot time	<input type="text" value="0"/> : <input type="text" value="0"/> (24-Hour Format)	<input type="checkbox"/> Enable
	Shut Down	<input type="text" value="0"/> : <input type="text" value="0"/> (24-Hour Format)	
Mon.	Boot time	<input type="text" value="0"/> : <input type="text" value="0"/> (24-Hour Format)	<input type="checkbox"/> Enable
	Shut Down	<input type="text" value="0"/> : <input type="text" value="0"/> (24-Hour Format)	
Tue.	Boot time	<input type="text" value="0"/> : <input type="text" value="0"/> (24-Hour Format)	<input type="checkbox"/> Enable
	Shut Down	<input type="text" value="0"/> : <input type="text" value="0"/> (24-Hour Format)	
Wed.	Boot time	<input type="text" value="0"/> : <input type="text" value="0"/> (24-Hour Format)	<input type="checkbox"/> Enable
	Shut Down	<input type="text" value="0"/> : <input type="text" value="0"/> (24-Hour Format)	
Thu.	Boot time	<input type="text" value="0"/> : <input type="text" value="0"/> (24-Hour Format)	<input type="checkbox"/> Enable
	Shut Down	<input type="text" value="0"/> : <input type="text" value="0"/> (24-Hour Format)	
Fri.	Boot time	<input type="text" value="0"/> : <input type="text" value="0"/> (24-Hour Format)	<input type="checkbox"/> Enable
	Shut Down	<input type="text" value="0"/> : <input type="text" value="0"/> (24-Hour Format)	
Sat.	Boot time	<input type="text" value="0"/> : <input type="text" value="0"/> (24-Hour Format)	<input type="checkbox"/> Enable
	Shut Down	<input type="text" value="0"/> : <input type="text" value="0"/> (24-Hour Format)	

After you configure all the **Scheduling** settings, press **Apply** to proceed.

## Tools

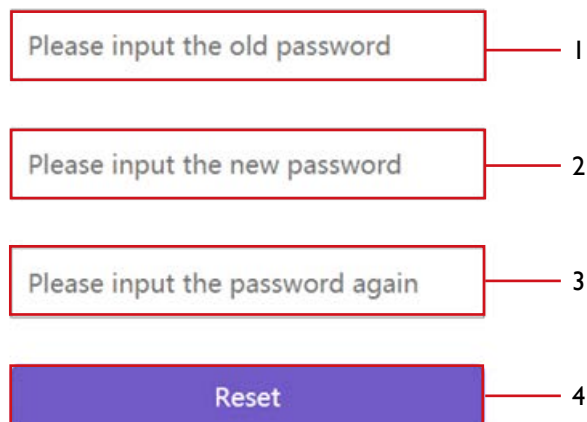
By clicking **Tools**, you can adjust **Password Setup**, **Firmware Upgrade**, **Configuration Management**, **Wi-Fi Traffic Test**, and **Log Setting**.



### Password Setup

You can change **Password** by:

1. Entering your old password.
2. Entering your new password.
3. Entering your new password again to confirm your new password.
4. Pressing **Reset** to proceed.



## Firmware Upgrade

The **Firmware Upgrade** sub-menu allows you to check for and execute firmware upgrades for both the Host and Button.

- **Checking for Upgrades (for Host)**

Before checking for a new firmware upgrade for your Host, ensure that the Host is connected via the WAN port to a router with access to the Internet, then click the **New Firmware Check** button to check for a firmware upgrade. To have the Host periodically check for firmware upgrades check the **Periodical Check** box.

- **Host Firmware Upgrade**

OTA	<b>New Firmware Check</b> <input checked="" type="checkbox"/> Periodical Check
Firmware Version	WDC30(R)_1.00
New Firmware Version	WDC30(R)_1.00
Firmware File	Select File Firmware Upgrade



Periodic checks for upgrades can only occur when the Host is connected via the WAN port to a router with access to the Internet.

If a new firmware upgrade is available the new firmware version will be listed in the **New Firmware Version** field.

- **Host Firmware Upgrade**

OTA	<b>New Firmware Check</b> <input checked="" type="checkbox"/> Periodical Check
Firmware Version	WDC30(R)_1.00
<b>New Firmware Version</b>	WDC30(R)_1.01 <b>Firmware Upgrade</b>
Firmware File	Select File Firmware Upgrade

## • Upgrading the Host's Firmware

After checking for and confirming the availability of a new firmware upgrade you will be able to upgrade your Host's Firmware. The product allows you to upgrade the Host's firmware using either an OTA (Over The Air) upgrade or a direct upgrade from an upgrade file located on your local computer.

To perform an OTA upgrade of the Host's firmware, click the **Firmware Upgrade** button in the **New Firmware Version** field.

### ▶ Host Firmware Upgrade

OTA	<input type="button" value="New Firmware Check"/> <input checked="" type="checkbox"/> Periodical Check
Firmware Version	WDC30(R)_1.00
New Firmware Version	WDC30(R)_1.01 <input type="button" value="Firmware Upgrade"/>
Firmware File	<input type="button" value="Select File"/> <input type="button" value="Firmware Upgrade"/>



To perform an OTA ensure that the Host is connected via the WAN port to a router with access to the Internet.



When performing any type of upgrade, DO NOT do any of the following:

- Power off or press the reset button on the Host or Button.
- Close the browser window of the web management interface.

Failure to follow these warnings will result in firmware upgrade failure and subsequent product failure.

To perform a direct upgrade from an upgrade file located on your local computer follow the steps below:



Before executing a direct firmware upgrade, please contact your BenQ regional office for access to the upgrade files.

1. Click the **Select File** button in the **Firmware File** field.

### ▶ Host Firmware Upgrade

OTA	<input type="button" value="New Firmware Check"/> <input checked="" type="checkbox"/> Periodical Check
Firmware Version	WDC30(R)_1.00
New Firmware Version	WDC30(R)_1.00
Firmware File	<input type="button" value="Select File"/> <input type="button" value="Firmware Upgrade"/>

2. Navigate to and select the firmware upgrade file.

3. Click the **Firmware Upgrade** button in the **Firmware File** field.

## ▶ Host Firmware Upgrade

OTA	<b>New Firmware Check</b> <input checked="" type="checkbox"/> Periodical Check
Firmware Version	WDC30(R)_1.00
New Firmware Version	WDC30(R)_1.00
Firmware File	<input type="button" value="Select File"/> Selected file: Firmware_Upgrade_RX10000_AP10100.zip <b>Firmware Upgrade</b>



When performing any type of upgrade **DO NOT** do any of the following:

- Power off or press the reset button on the Host or Button.
- Close the browser window of the web management interface.

Failure to follow these warnings will result in firmware upgrade failure and subsequent product failure.

### • Upgrading the Button's Firmware

You can upgrade the Button's firmware using an upgrade file located on your local computer or directly from your Host via the connection between the Button and Host.

To upgrade the Button's firmware using an upgrade file located on your local computer follow the steps below:

1. Select **from a local file** in the **Firmware File** field and then click the **Select File** button.

## ▶ Button Firmware Upgrade

Button firmware version in Host	WDC30(T)_1.00
Firmware File	<input checked="" type="radio"/> from a local file <input type="button" value="Select File"/> <input type="radio"/> from RX
Upgrade selected InstaShow X button	<b>Firmware Upgrade</b>

### Warning

- Don't power off or press the reset button during the process of firmware upgrading.
- Don't close the window during the process of firmware upgrading.

2. Navigate to and select the firmware upgrade file.

3. Select the Button you want to upgrade and then click the **Firmware Upgrade** button in the **Upgrade selected InstaShow X button** field.

## ▶ Button Firmware Upgrade

Button firmware version in Host	WDC30(T)_1.00
Firmware File	<input checked="" type="radio"/> from a local file <input type="button" value="Select File"/> Selected file: WDC30(T)_0.94.00_A.img <input type="radio"/> from RX
Upgrade selected InstaShow X button	<input checked="" type="radio"/> 20:50:E7:39:D6:2A WDC30(T)_0.94 <b>Firmware Upgrade</b>

### Warning

- Don't power off or press the reset button during the process of firmware upgrading.
- Don't close the window during the process of firmware upgrading.



When performing any type of upgrade DO NOT do any of the following:

- Power off or press the reset button on the Host or Button.
- Close the browser window of the web management interface.

Failure to follow these warnings will result in firmware upgrade failure and subsequent product failure.

To upgrade the Button's firmware directly from your Host follow the steps below:

1. Select **from RX** in the **Firmware File** field.

**Button Firmware Upgrade**

Button firmware version in Host	WDC30(T)_1.00
Firmware File	<input type="radio"/> from a local file <input type="button" value="Select File"/> Selected file: WDC30(T)_0.94.00_A.img <input checked="" type="radio"/> from RX
Upgrade selected InstaShow X button	<input checked="" type="radio"/> 20:50:E7:39:D6:2A    WDC30(T)_0.94 <input type="button" value="Firmware Upgrade"/>

**Warning**

Don't power off or press the reset button during the process of firmware upgrading.

Don't close the window during the process of firmware upgrading.

2. Select the Button you want to upgrade and then click the **Firmware Upgrade** button in the **Upgrade selected InstaShow X button** field.

**Button Firmware Upgrade**

Button firmware version in Host	WDC30(T)_1.00
Firmware File	<input type="radio"/> from a local file <input type="button" value="Select File"/> Selected file: WDC30(T)_0.94.00_A.img <input checked="" type="radio"/> from RX
Upgrade selected InstaShow X button	<input checked="" type="radio"/> 20:50:E7:39:D6:2A    WDC30(T)_0.94 <input type="button" value="Firmware Upgrade"/>

**Warning**

Don't power off or press the reset button during the process of firmware upgrading.

Don't close the window during the process of firmware upgrading.



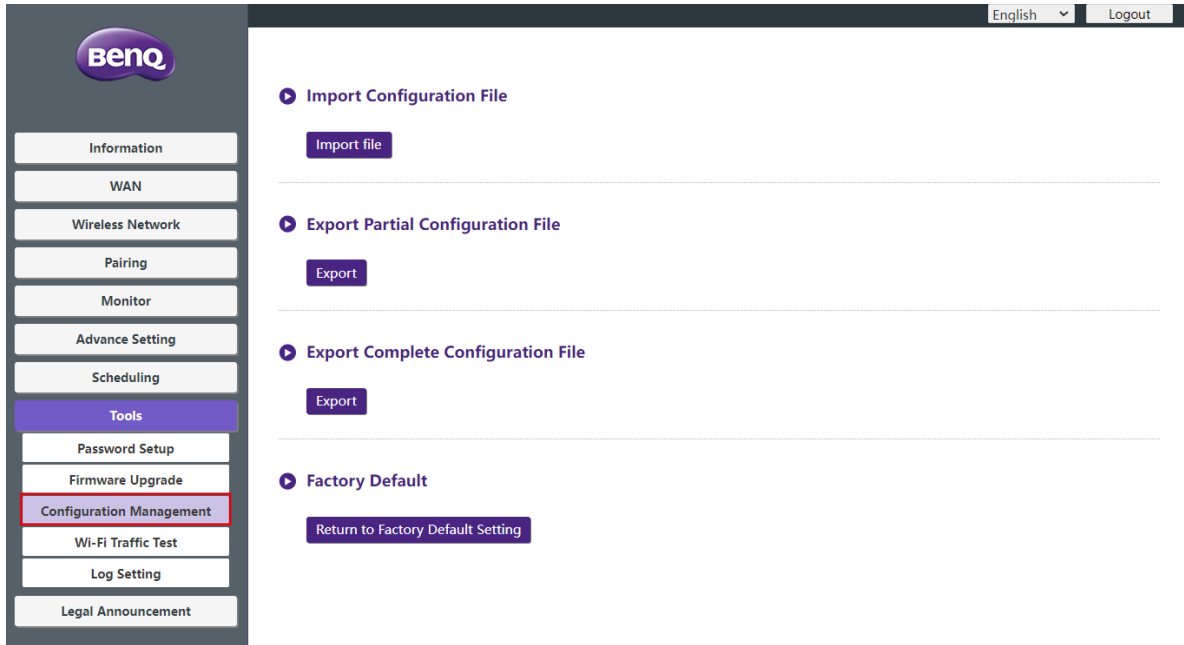
When performing any type of upgrade DO NOT do any of the following:

- Power off or press the reset button on the Host or Button.
- Close the browser window of the web management interface.
- The button of Firmware Upgrade becomes gray out when the version in Button is newer than the version in Host.

Failure to follow these warnings will result in firmware upgrade failure and subsequent product failure.

## Configuration Management

Configuration backup files feature the configuration settings for your Host except for the host name, SSID and wireless password settings, and pairing status. In **Configuration Management**, you can choose **Import Configuration File**, **Export Partial Configuration File**, **Export Complete Configuration File**, and **Factory Default**.



You can import configurations files by:

1. Clicking **Import File** to choose the file to import.

▶ **Import Configuration File**

**Import file**

2. Navigating to and selecting the configuration file you want to import from your local computer.

You can export a partial configuration backup in the **Export Partial Configuration File** sub-menu by:

1. Clicking **Export**.

▶ **Export Partial Configuration File**

**Export**

2. Navigating to the folder you want to save the backup file to in your local computer and then choosing **Save**.

3. The following set values will not be exported:

a.	<b>Information: Host Name</b>
b.	<b>Wireless Network: SSID setting and password setting</b>
c.	<b>Pairing: Pairing Status</b>

You can export a full configuration backup in the **Export Complete Configuration File** sub-menu by:

1. Clicking **Export**.

▶ **Export Complete Configuration File**

**Export**

2. Navigating to the folder you want to save the backup file to in your local computer and then choosing **Save**.

---

**!** The exported configuration file can only be imported by the same Host that exported the file. The configuration file cannot be imported by any other Hosts.

---

You can have the Host restore to **Factory Default** by clicking **Return to Factory Default Setting**.

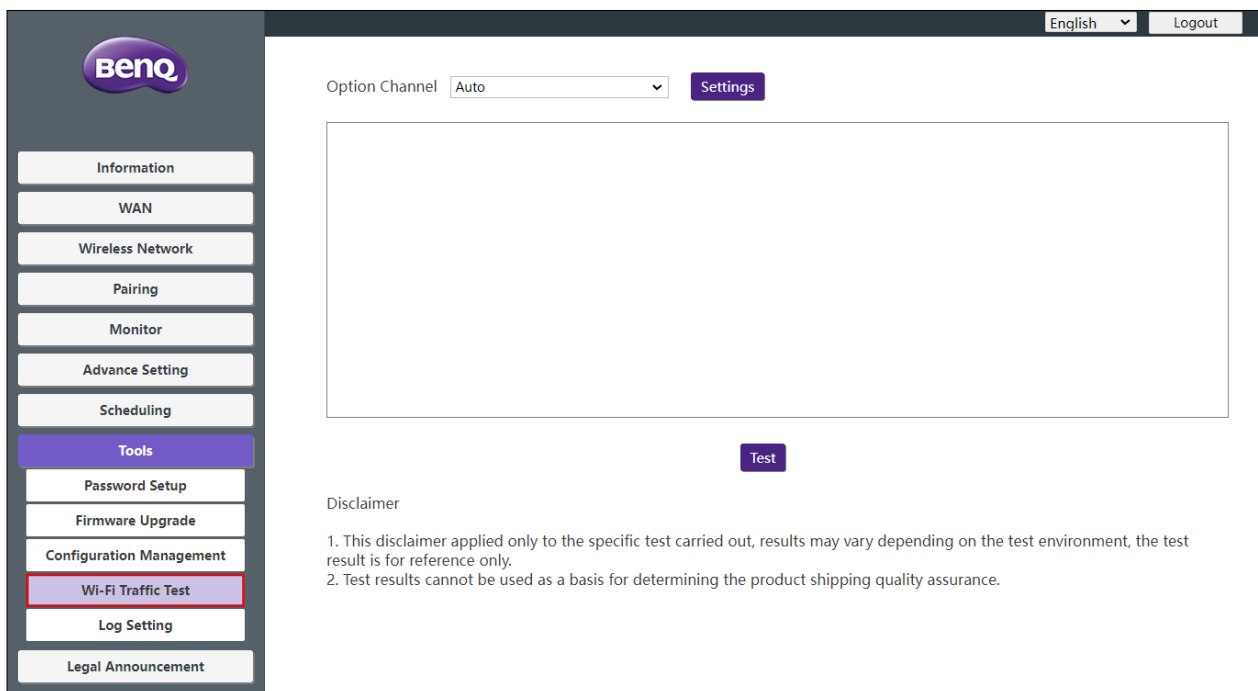
▶ **Factory Default**

**Return to Factory Default Setting**

When the process is confirmed the Host will begin restoring to **Factory Default** and the LED will quick flash red (flash red twice every second) then restart. After the Host restarts the entire process is complete.

## Wi-Fi Traffic Test

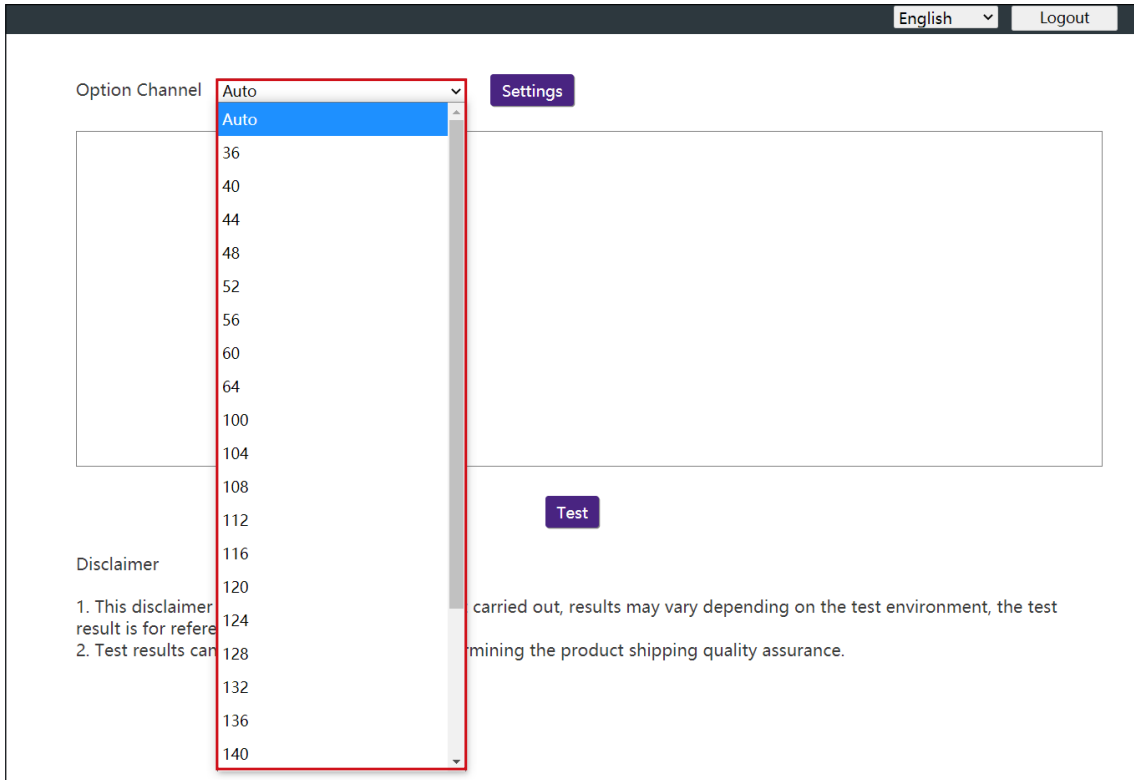
The **Wi-Fi Traffic Test** sub-menu allow you to test the speed of the connection between your Host and the Button.



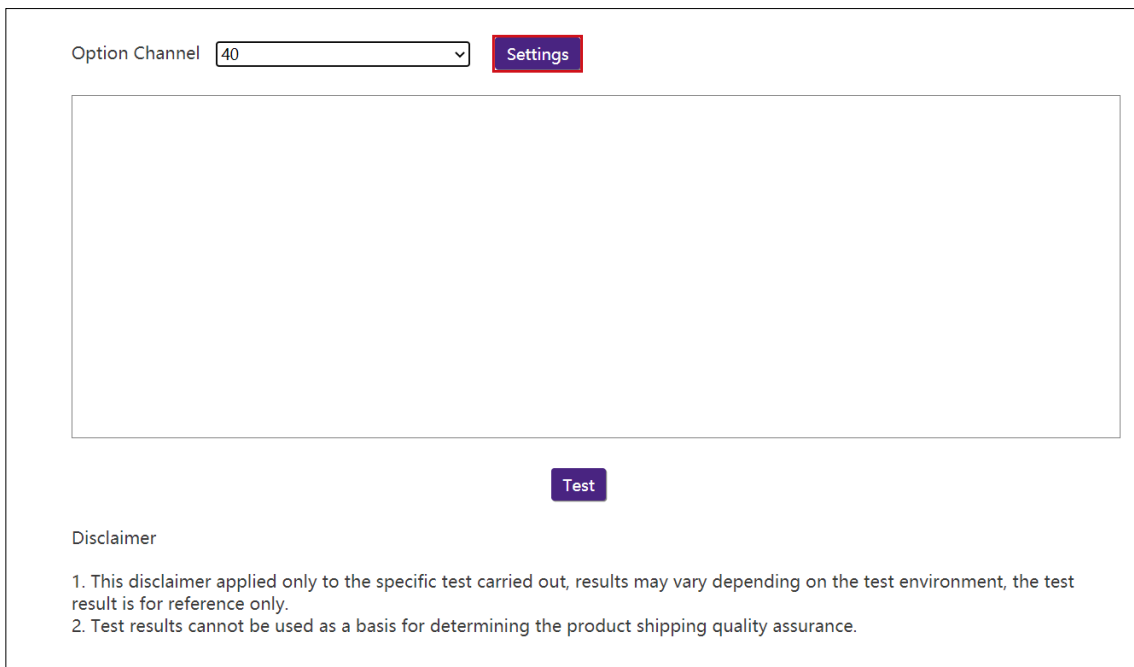
To test the speed of the connection follow the steps below:



I. Select the channel you want to test the speed of in the **Option Channel** field.



2. Click the **Settings** button to set the channel test.



3. Click the **Test** button. The results of the test will be shown in the main window.

Option Channel

Disclaimer

1. This disclaimer applied only to the specific test carried out, results may vary depending on the test environment, the test result is for reference only.
2. Test results cannot be used as a basis for determining the product shipping quality assurance.

Option Button

Option Channel

```
[ 4] 78.0-79.0 sec 18.1 MBytes 152 Mbbits/sec
[ 4] 79.0-80.0 sec 16.2 MBytes 136 Mbbits/sec
[ 4] 80.0-81.0 sec 18.4 MBytes 155 Mbbits/sec
[ 4] 81.0-82.0 sec 18.1 MBytes 152 Mbbits/sec
[ 4] 82.0-83.0 sec 17.0 MBytes 142 Mbbits/sec
[ 4] 83.0-84.0 sec 15.5 MBytes 130 Mbbits/sec
[ 4] 84.0-85.0 sec 18.2 MBytes 153 Mbbits/sec
[ 4] 85.0-86.0 sec 17.9 MBytes 150 Mbbits/sec
[ 4] 86.0-87.0 sec 18.5 MBytes 155 Mbbits/sec
[ 4] 87.0-88.0 sec 17.8 MBytes 149 Mbbits/sec
[ 4] 88.0-89.0 sec 17.9 MBytes 150 Mbbits/sec
[ 4] 0.0-90.0 sec 1.51 GBytes 144 Mbbits/sec
```

Test over...  
-----

Disclaimer

1. This disclaimer applied only to the specific test carried out, results may vary depending on the test environment, the test result is for reference only.
2. Test results cannot be used as a basis for determining the product shipping quality assurance.



# Troubleshooting

Category	Problem	Cause	Solution
Your screen	Your screen is not appearing on the display when pressing the Button.	The Button is connecting to another Host.	The Button should be paired again with the Host.
		Pressing time is not enough.	Press the Present key until the LED indicator turns from green to blue.
	The screen turns blank or flickers when the Host is presenting.	Insufficient power supply.	Make sure the product's power is properly supplied or connected.
	The screen lags seriously and the audio breaks up sometimes.	Insufficient power supply for the Button. An laptop with USB 2.0 port may be used as the power supply for the Button.	Make sure you use USB 3.0 as the power supply for the Button.
		Wi-Fi interference or signal attenuation	<ul style="list-style-type: none"> <li>• Make sure the transmission distance is within 15 meters and with no obstacles.</li> <li>• Restart the Host in order to rescan the Wi-Fi 5G channel.</li> <li>• Log in <b>Web Management &gt; Wireless Network &gt; Wi-Fi Radio Setup &gt; toggle the Transmission power</b></li> </ul>
The Button	The Button automatically restarts sometimes.	Insufficient power supply.	Make sure you use USB 3.0 as the power supply for the Button.
	The LED indicator on the Button remains static red even after it has been powered on for 30 seconds.	The Button has not been properly powered off during the resetting process.	Reset the Button.
	The pairing function Reset the Button. Cannot be executed via the <b>MODE</b> key while the Button is powered on and the LED starts flashing red.		
The Host	Nothing is shown on the display at all.	The display is switched off.	Switch on the display.
		The wrong input is selected.	Select the correct input.

Category	Problem	Cause	Solution
The Host	Nothing is shown on the display at all.	The video cable is not connected properly.	Insert the HDMI cable between the Host and the display device again.
		The display fails to show the Host's output resolution at 1080p in "Guide Screen" or "Idle Screen".	Replace the display with a new one that supports output resolution at 1080p.
		The Host is in <b>Network Standby Mode</b> when Video Conference Standby Mode and the function is enabled.	Press the Present key of the Button to start presentation.
		The Host is in <b>HDMI Standby Mode</b> when HDMI standby function is enabled.	Briefly press the standby button on the Host or power on the display (connected to the Host with an HDMI cable). The Host will wake up automatically.
		The Host is powered off.	Briefly press the standby button on the Host.
		Insufficient power supply.	Change power supply of Host to a power adapter.
	The LED indicator on the Host remains static red even after it has been powered on for 30 seconds.	The Host has not been properly powered off during the resetting process.	Reset the Host.
EDID	After connecting the Button to your laptop, the second screen (InstaShow™) cannot be detected.	The HDMI connection between your laptop and the Button is loose.	Reconnect the HDMI cable of the Button.
		Laptop problem	Reboot your laptop.
		The Button is shutdown.	Reconnect the USB cable of the Button.
Pairing	The message, <b>Pairing failed</b> , from the Host is shown on the display when the Host is pairing with the Button.	1. Error: 1103 2. The Host has reached the maximum number of pairing.	Log into the web management, then select <b>Pairing &gt; Pairing Status &gt; Delete</b> Delete unnecessary pairings.
		Wi-Fi interference or signal attenuation	Make sure the transmission distance is within 15 meters and with no obstacles.
		The Button has not entered the pairing mode in time.	When the Host enters pairing mode, the Button should also enter pairing mode within two minutes.

Category	Problem	Cause	Solution
Windows Software	When presenting a video file via Gom Media Player, the full-screen image is cut into upper and lower halves.	Media player	Use other media players to play video files, such as Windows Media Player.
Web management	Cannot Log in	Forget the account and password.	1. Reset the Host. 2. The default log in account: admin 3. The default log in password: 0000.
	Laptop cannot connect the SSID with the correct password by Wi-Fi.	Laptop Wi-Fi module cannot support 802.11 AC.	Laptop can connect to the Host with an Ethernet cable instead of Wi-Fi connection.
SD Card	The guide screen show “ <b>Security Module Unplugged</b> ” UI tips.	The Host hardware loses the SD card.	Contact the hardware device vendor's technical support or BenQ Support for help.
	The guide screen show “ <b>Security Module Broken</b> ” UI tips.	The SD card had been broken.	Contact the hardware device vendor's technical support or BenQ Support for help.

## Error code

RX Error Code	Cause
I100	TX return Error
I101	Pairing Timeout
I102	Stop pairing
I103	Pairing limit reached
I200	5G Wifi is off
I201	Failed to open pairing hotspot
I202	Failed to get 5G Wifi
I203	Failed to close pairing hotspot
I300	Failed to find USB-port
I301	Failed to open USB-port
I302	Failed to find USB endpoint

I303	Failed to write data
I304	Failed to read data
I305	Error Data Code
I306	Invalid data
I307	USB pairing is abnormal
I308	WDC30TX pairing failed
TX Error Code	Cause
2001	TX inactivated
2002	Failed to write pairing information to vendor partition
2003	TX does not burn SN/Mac/version number



**BenQ.com**

© 2022 BenQ Corporation.  
All rights reserved. Rights of modification reserved.