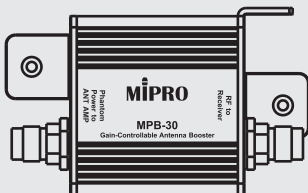


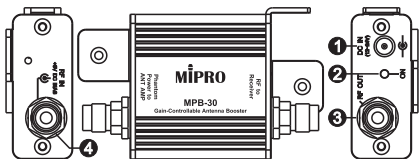
MIPRO[®]

User Guide

MPB-30 Gain-Controllable Antenna Booster



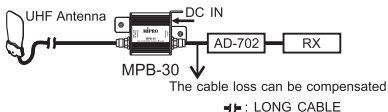
I. Part Names



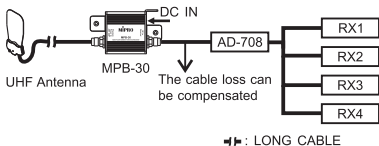
- 1** DC IN SOCKET
- 2** LED INDICATOR
- 3** RF OUTPUT CONNECT
- 4** RF INPUT CONNECT

II. Application

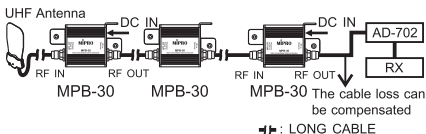
1. Basic Installation



2. Automatically Compensates for the Cable Loss

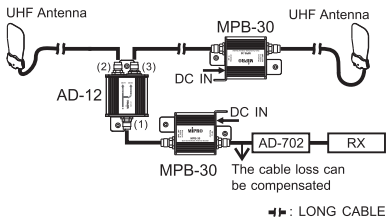


3. Long Cable Set-Up

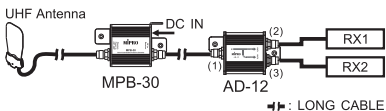


Antenna Booster

4. Enhance Receiving Signal by use of Antenna Combiner

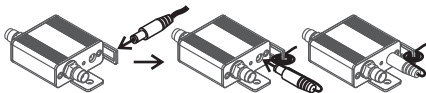


5. Divide Receiving Signal by use of Antenna Divider



IV. DC Power Cable Connection

Insert and wrap cable according to the diagram for a firm and secure connection to a MPB-30.



V. Cable Connection Recommendation

1. Insufficient or exceeding signal strength will occur if the cable used is too long or too short.
2. Note: Refer to the actual product in the event of product description discrepancy.

MIPRO[®]
MICROPHONE PROFESSIONALS



All rights reserved. Do not copy or forward without prior approvals of MIPRO. Specifications and design subject to change without notice. YM 022/10

MIPRO Electronics Co., Ltd

Headquarters: No. 814, Beigang Rd., Chiayi City 600079, Taiwan
Tel : +886.5.238.0809 Fax : +886.5.238.0803
www.mipro.com.tw mipro@mipro.com.tw



2CE507B